

the Newsletter

Big Moore's Run Lodge



Big Moore's Run Lodge What's New

Bill is back...

There have been numerous stories and rumors that have been passed around about Bill Haldaman's health. Well, the simple truth about them is that Bill Haldaman is healthy and he did not sell the lodge. He was ill

for a period of time but everything is back to normal. His lodge, Big Moore's Run Lodge, is up and running. He is an Orvis endorsed outfitter. His fly fishing clinic is ready to show you how to be a better fly fisherman. In fact, he is going to have three clinics in Montana (*see story next page*).

So to summarize...Bill Haldaman is not sick. Big Moore's Run Lodge is full operational and his staff of professional guides and instructors are ready to serve you. In fact, he has added a new 10 station sporting clay course to the lodge with James Wolfe as instructor.

New Stream Improvements

The 1996 flood did some minor damage to our stream. At the end of last year we completed 20 more jack dams to help improve the holding water and prevent any further flood related damage.

Bill Haldaman's Montana Fly Fishing Clinic

August is a hot month down on the coast. Why not try something different this year...escape to the mountains. Or better yet, the Rockies and tune up your fly fishing to a precision catch and release machine.

This year we have a special treat for all of you who have thought of coming to Montana, North America's trout and fly fishing Mecca. Bill Haldaman and his staff of expert guides are having three



special clinics on fly fishing in one of Montana's best kept secret fly fishing destinations, the Yellowstone Inn Bed & Breakfast in Gardiner, in the heart of the Rocky Mountains.

Each clinic is designed to take you to the new level of fly fishing whether you are just beginner or a seasoned expert. The clinic is to show you the real in's and out's of mastering the quiet sport. Bill and his instructors will cover everything from simple casting points to reading the most difficult stream. Each clinic is three days of intense instruction tailored to your present abilities with hours of on-stream application



Continued on next page

Big Moore's Run Lodge, Ltd.

2218 Big Moores Run Road

Coudersport, PA 16915

Toll Free: (877) 244-6667

Ph: (814) 647-5300

Fax: (814) 647-9928

Email:

bigmoores@out-doors.com



where Bill will work with you while you are fishing one of the most pristine streams in America. When you leave the clinic you will not only have the techniques and knowledge but will have already put them into use.

For an added bonus, there is an optional fourth day in each clinic with something that is truly special. Bill and his staff will accompany you via horseback to a private alpine lake high in the mountains where the trout are as dumb and fat as you could ever dream. The kind of place where the only noise you will hear is the breeze drifting through the Ponderose Pines and an occasional elk bugling. The water here is so clear you will have to touch it just make sure that there is water in the lake. If the scene is not enough, remember the entire time you will be with Bill Haldaman and his guidance on how to catch trophy trout.

Bill Haldaman is considered by many including the experts like Jerry Gibbs, Ed Jaworowski, author of the "The Cast", and others as

one of the best instructors in fly fishing. He has been featured in a number of shows and articles showing the finer points of fly fishing and how to be successful at one of the most challenging sports in America. If you want to be become accomplished at fly fishing you want to meet with Bill Haldaman. He will take any level of fisherman to the next level by showing you what you can do and not what he can do.

Clinic Dates and Details

So if you are still reading... we've got your interest.

Check out this awesome schedule, including an optional fourth day horseback pack trip to an alpine lake high up in the Rockies:

Clinic #1 – Aug. 18, 19, 20
Check-in — Aug. 17
Optional pack trip — Aug. 21

Clinic #2 – Aug. 22, 23, 24
Check-in — Aug. 21
Optional pack trip — Aug. 25

Clinic #3 – Aug. 26, 27, 28
Check-in — Aug. 25
Optional pack trip — Aug. 29

Arriving a day early is advisable because we start bright and early on the first day. Check in time is from noon to 10 pm.

Clinic Schedule:

<i>Breakfast:</i>	8 am
<i>Clinic:</i>	9 am
<i>Lunch Break:</i>	1 pm
<i>Clinic:</i>	2 pm
<i>Dinner Break:</i>	5:30 pm
<i>Free Time to Fish</i>	

If you haven't had enough fishing by this time, then af-

ter dinner you can go back out and hit the water for the evening hatches, putting your new techniques to use. Besides the Gardiner River and the Yellowstone River, many of Yellowstone's most famous streams are only a short drive away.

Below is the basic itinerary for the clinic:

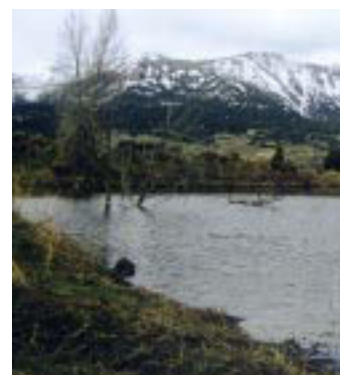
Day #1 - Fly fishing equipment, use of hatch chart, book called "Stream Insect Identification", reading waters, and casting (pickup, roll, combination, hauling)

Day #2 - Stream fishing techniques with streamers, dries, emergers, nymphs, midges.

Day #3 - Hands on solo confidence building, review and fine tuning of techniques followed by a dinner with awards and diplomas

Cost of the Clinic

The cost for the three day clinic cost is \$425 per person and includes lunch (lodging and meals extra). The optional fourth day horseback pack trip is an additional \$300 per person and includes everything including a float tube and lunch. Of course, if you book by June 30th there is a discount on lodging for



booking early. Clinics should be booked through Big Moore's Run Lodge at 877-244-6667 (toll free).

Lodging Information

Located at the north entrance of Yellowstone Park, the Yellowstone Inn Bed & Breakfast is a charming turn-of-the-century stone home and is Gardiner's oldest bed & breakfast. Inn keepers, Douglas and Sidney Ames are known for their "At Your Service" guest services which include a hearty mountain breakfast or accommodations for early risers with "Sunrise Breakfasts." "Mammoth Big Break" boxed lunches are available and evening meals range from Red Roasted Pasta and Caesar salad to "Steak Montana." The inn offers fishing enthusiasts, from novice to expert, an atmosphere where they can feel at home. Classic country furnishings, barn wood pieces and local artists' work add warmth to the home. Guests are invited to "put their feet up" and enjoy a wildlife video, experience a therapeutic massage or sit in the hot tub after a long day of fishing. For those who have RV's and will be tramping across America, Sidney can arrange full service RV hook up near the Inn and you can still have meals at the Inn. Call Sidney about RV rates Be sure to ask about ground transportation if you are flying in.

Accommodations: (406) 848-7000 or email: sames@wyellowstone.com.

Redesigned Website

Go check out www.bigmoores.com. We have a completely new website that was designed to make it easy to find all the information you need about

**Bill Haldaman's
Big Moore's Run Lodge**

Big Moore's Run Lodge. The new site includes everything and I mean everything about Big Moore's fishing, hunting, sporting clays and lodging. We even have a great new map to find us when you are driving here.

A little something special this summer...

Single Day of Fly Fishing

on our Private Stream

This includes no meals or lodging and reservations 24 hours in advance. Fishing is catch & release only, barberless hooks from 7:30 am to dark. Our trophy lake is an additional cost and is great for float tubing or it can be fished from the shore line.

Two Fisherman per day - \$235

Single Fisherman per day - \$125



Big Moore's Run Lodge Sporting Clays



We are very proud to introduce our new wing shooting instructor James Wolf known as "Jim" Wolf a national sporting clays associate Level II instructor Master class. "Shot-gun Marksmanship"

The discipline of good shooting can be learned through quality instruction and you now have the opportunity to take advantage of Jim's 18 years of training and sporting clays competition experience.

Jim's Accomplishments Include five time High Overall State Championships, three time Runner Up State Championships, one time Overall Provinal and numerous high over all.

Development of Consistent shooting is quickly learned with Jim's quality instruction and coaching.

Big Moore's Run Lodge offers two distinct types of shooting instruction: Instinctive Method and Swing Through. Each system has

its own merits depending on the type of shooting one is encountering. For example, the upland hunter is nearly always in stride when the bird gets up. Thus, the moment of the flush and escape route chosen by the bird are completely unpredictable, and in dense cover, reaction time is essential. For this type of shooting, the instinctive method works best. A sporting clay enthusiast, on the other hand, has prior knowledge regarding the upcoming shot that the field hunter does not. Since when, and where, are known, the target shooter should be fully prepared and with a good technique, shoot much higher percentages on clays than the average hunter can expect to achieve on game. Swing through is the more common technique used for sporting clays. Choose which ever method suits your needs or work on both.

Our schools cater to upland bird hunters, waterfowlers, sporting clay shooters, beginners and intermediates. Private instruction is available on request. Scheduled schools operate with a student-to-instructor ratio of 3:1. Special schools and shooting activities for corporate groups can be arranged. We are especially adept at introducing women and youngsters to the art of shotgunning.

Wingshooting Schools and Instruction

Guaranteed to improve your skills!

Our Wing Shooting School includes:

- *Professional instruction using our comprehensive teaching system.*
- *Use of protective eye wear, hearing protection and recoil pad.*
- *Use of our firearms.*
- *All targets and ammunition.*
- *Safety inspection and full stock measurements of your firearms.*
- *Suggestions for alterations to improve your stock fit.*
- *Thorough introduction to safe and efficient gun handling.*
- *Video analysis of your technique.*
- *Lunch during 1 and 2 day schools.*
- *A lot of fun!*

Cast & Blast Weekend

This package is sure to become our top feature here at the lodge. Guests are treated to our whole enchilada, so to speak. You get a half day of wingshooting instruction, a half day shooting the sporting clay range, and two half days of fly fishing on both our lake and private stretch of stream for lunker trout. It includes three nights lodging, open menu dinner two evenings, two lunches and three breakfasts. Fishing guides optional. Pennsylvania fishing license required.

*Double Occupancy
Per Person - \$750*

Single Occupancy - \$795

Big Moore's Run Lodge The Experience

There is home cooked meals and there are five star restaurants but for dining experience that you will never forget than you owe it to yourself to make a trip to Big Moore's Run Lodge.

Now we are not talking about your typical fair but a truly exotic and special dinner that comes with all the ambience and charm that you would expect from the mountains in Potter County. If you don't believe me take a look at that menu to the right and you will be a true believer.

Add to that a top notch bar serving with all the top shelf drinks, a very select wine list, all the trimmings a meal requires, a cozy warm fire cracking away, the beautiful backdrop and you have only one thing to worry about.....

will you ever want to leave and go home.

Restaurant Menu

From the Grill

New York Strip, Filet Mignon, Delmonico, Pork Chops, Lamb Chops, Country Ham Steak

Game Specials

Quail, Pheasant, Duck

Seafood Delicacies

Flounder Monte Carlo, Icelandic Haddock, Orange Roughy, Salmon Fillet, Whole Trout

The hospitality at Big Moore's Run Lodge is great, and so is the fishing. A stay you'll always remember."

Merl Beachell, Harrisburg, PA



Seeking Big Trout Thrills



With more than eight hundred miles of trout streams in Potter County alone to choose from, finding a good place of choice is often an adventure in itself, where wildlife and scenic views abound.

We fish a unique area of Pennsylvania where waters from headwater streams find their way in three directions. The many major northeastern streams and rivers start right here in Potter County from small springs. I enjoy show-

ing people where the Allegheny River bubbles out of a spring or where you can step across the Sinnemahoning in one step.

With streams so fertile you get to see many different hatches including mayflies, caddis, stoneflies, and midges. Late season trout feed well on the terrestrials such as ants, grasshoppers, and beetles. Always, subsurface offerings are always productive.

Fishing the remote and picturesque headwater streams of Potter County will not be an experience you will soon forget. Fishing them with our guides at Big Moore's Run Lodge will be an experience you will never forget.

Call today on our toll free number, (877) 244-6667 to book the experience of a lifetime. We are an Orvis endorsed outfitter with a complete Orvis flyshop.

ORVIS®



Big Moore's Run Lodge, Ltd.
2218 Big Moores Run Road
Coudersport, PA 16915

