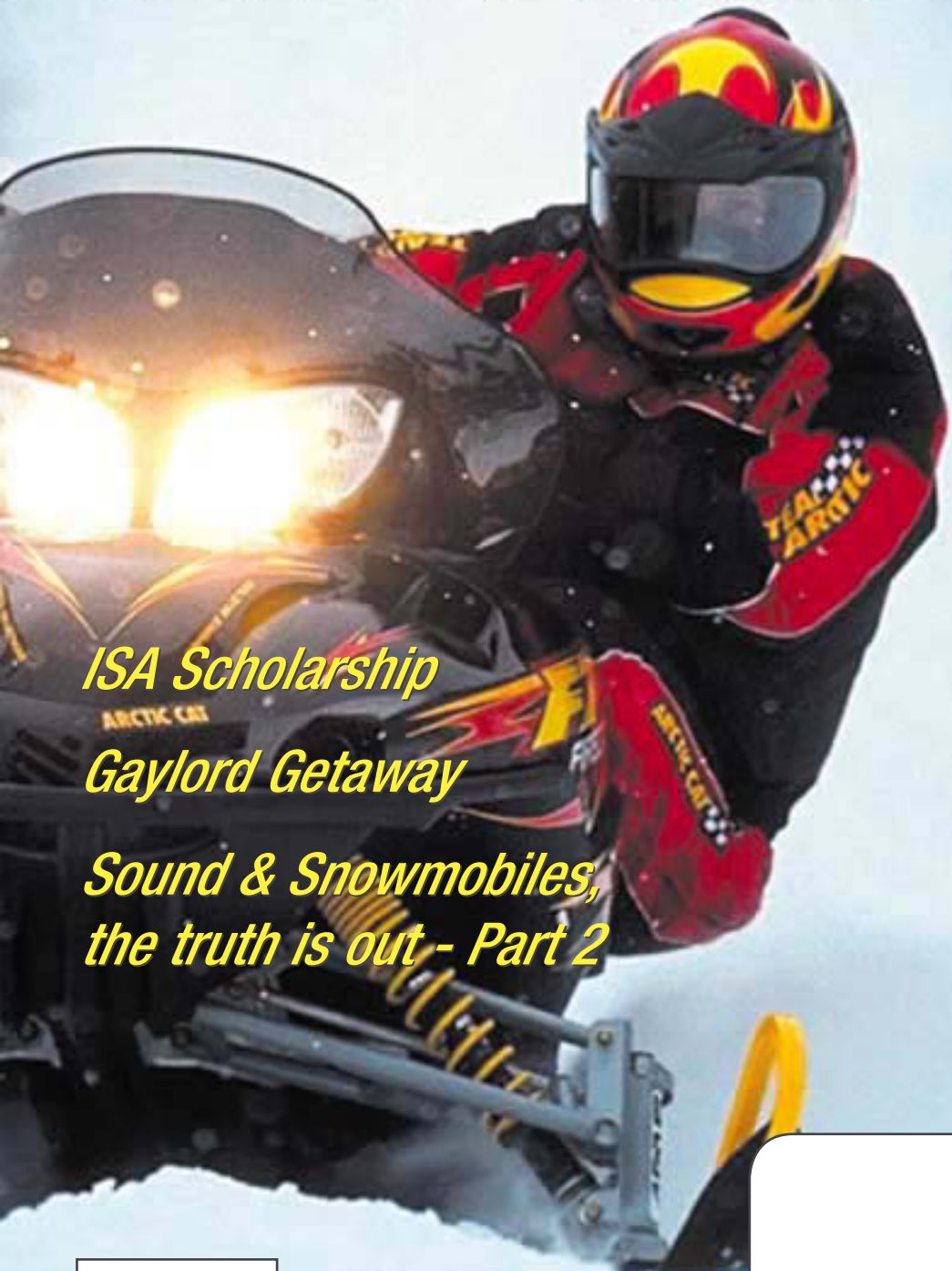


HOOSIER *Hoosier Snowmobiler* SNOWMOBILER



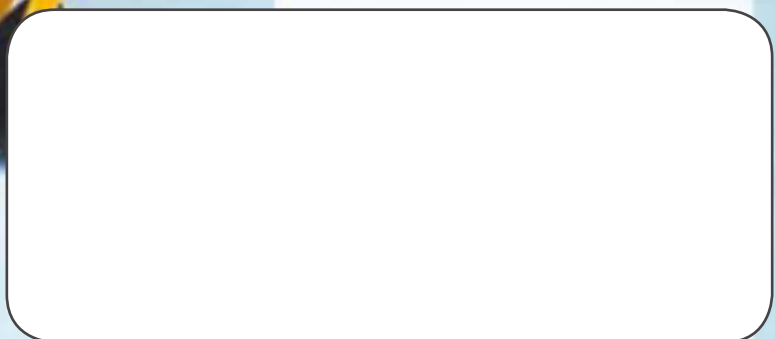
ISA Scholarship

Gaylord Getaway

*Sound & Snowmobiles,
the truth is out - Part 2*

INDIANA SNOWMOBILERS ASSOCIATION

Winter Sports Show



Presort Std
U.S. Postage
PAID
Cleveland, OH
Permit No. 1

This issue was mailed before Dec. 3rd.
The date it arrived was _____.
If the date it arrived is more than 9 days
after the mailing date, please ask your
local postmaster "WHY?"

Ride Safely!

Ride with a Partner



Hoosier Snowmobiler
P.O. Box 1512
Concord, Ohio 44077
Published By L.B.L. Litho, Inc.
1-877-9 SNOMAG
FAX: (440) 350-0108

Advertising Sales
1-888-SNORIDE
FAX: (734) 475-7080

STAFF

Publisher
Brian Gidley

Editor in Chief
Larry Gidley

Advertising Director
Harry Thurkow
Connie Lehman
Melissa Anthony

Art Director
JPS Design Group
www.jpsdesign.com

Technical Editor
Lois Gidley

Copy Editor
Nancy Kuper

Production Engineers
Bill Oboczky
Josh Siferd

Circulation: The Hoosier Snowmobiler is the official publication of the Indiana Snowmobilers Association and is distributed as part of the membership benefits of ISA. It is also circulated through select promotional distributions. The Hoosier Snowmobiler is published six times a year (September, October, November, December, January and February).

Editorial: All manuscripts, materials, photographs, and artwork submitted are at mailer's own risk and must include a self-addressed envelope with sufficient postage for return. No responsibility will be assumed for unsolicited materials. Contents copyright 2002 by L.B.L. Litho, Inc. All rights reserved. Reproduction is prohibited unless expressly authorized in writing by publisher. Printed in USA.

Warning: Some of the photographs in this publication show action that may be potentially dangerous. We encourage safe operation of all snowmobile equipment and advise you not to attempt to duplicate any action that is seen on these pages. Let your experience and skill guide you.

Disclaimer: The contents of advertisements which appear in the Hoosier Snowmobiler are solely the responsibility of advertisers.

Advertiser Index is located on page 35.



Features

- 7 A Very Special Thank You
- 8 Polaris 2003 WOW Relay
- 13 Gaylord Getaway
- 14 Grass Dragging for Beginners
- 18 ISA Winter Show
- 27 ISA Scholarship

Departments

- | | | | |
|----|----------------------------|----|--------------------|
| 4 | Message from the President | 24 | Club News |
| 6 | The Intrepid Snowmobiler | 32 | Commercial Members |
| 9 | ISA Board of Directors | 34 | Motel Guide |
| 10 | ISMA | 35 | Classified Ads |
| 12 | Calendar of Events | | |



President's Message

It's here! The best time of the year, Our time of year. I'm going to start this months arti-

cle by telling you if were not able to attend this years ISA Winter Sports Show & Convention in Muncie, you missed a good one. It was our last year in Muncie and the Horizon Center staff directed by Melanie Baden, along with the catering company, Masterpiece Creations, led by Christal Johnson, out did themselves again in providing everything we needed or wanted. Its been such a joy working with these people for 3 years I hate to think about moving on to our new location for 2003.

The support this year by our clubs, dealers and membership was outstanding. We filled the show to capacity with vendors offering stock items for all 4 manufacturers to a wide variety of after market products and then some. There were good deals to be had all over the show on trailers, sleds, ATVs and accessories. If that wasn't enough, the ISA Silent Auction had 67 items, from a Z120 down to Sally Roger's famous fudge, which almost started a riot over the bidding. Sally's homemade fudge is awesome.

Following the ISA's commitment to safety and family snowmobiling we had our DNR Snowmobile Safety Course on Sunday, which set another attendance record with 52 present. A big thank you goes out to Tim Colip, our ISA Safety

Coordinator, well-done Tim. Tim Colip received an ISA Outstanding Service Award at our Saturday Night Banquet for his years of **"Leading The ISA In Snowmobile Safety"**.

Along with our normal activities for the kids, the Muncie Children's Museum, the snowmobile picture booth and the Play Station snowmobile racing on the big screen TV, we added a rock-climbing wall for their entertainment. I even saw a few adults challenging the wall, a couple of them even made it to the top!

The ISA Convention, which as you know is going on at the same time, was a bit different this year with great results. With the festivities starting on Friday night, we have always had a small catered welcoming party lasting about 2 hours. This year we decided to have a hospitality room in the Presidential Suite on the top floor of the Roberts Radisson Hotel across the street from the Horizon Center. We had this open from 5:00pm-11:00pm which allowed all the members and show vendors to go back and forth while setting up for the show all evening. Sally Rogers volunteered to take care of the food, which turned into a feast and the free bar was stocked with everything anyone could want. Well, except for a blender, which will not be forgotten next year. Then to our surprise the entertainment booked for Saturday night, Jay McLaughlin a Magician, came up to check things out and wound up performing all evening,

to the delight of everyone present. This new Friday night format was received with great enthusiasm. The ISA directors are always working on new ideas to better serve the membership.

The Saturday night Awards Banquet was great fun with a very laidback atmosphere, starting with me being totally unprepared due to the fact that someone didn't put enough hours in the day. So, being true to form, I did what I do best, I winged it. Seeing the ISA President fumbling around at the podium, seemed to put other people who came up to receive awards at ease. This years Award Program was a little different, with most of the awards spread out among many clubs. This made for a lot of happy members and proved what I've been saying for years, if you put your mind to it and send in the forms, any club is capable of winning any awards. Congratulations to all the winners for their hard work and determination.

All in all, the ISA Winter Sports Show & Convention was great fun for everyone who attended. The only complaint I heard was about me talking too much on the microphone at the show. If anyone is interested, we will be taking applications for next years Show MC. After the ISA's reorganization this fall, and with some ISA Directors filling new positions and some taking on new responsibilities, I could not be prouder of the job they did and the total commitment they had in making the show and convention something the entire member-



December 2002

ship could be proud of. This event made me look pretty good, but it was them. Thanks to all of you.

I hope everyone read my article in the November Issue of the Hoosier Snowmobile, the part about the newly remodeled Best Western Alpine Lodge, formerly the Gaylord Holiday Inn. This is the facility the ISA has chosen for the 2003 Ride-In. We are very excited and are sure you will be pleased with what we are planning. There will be a small increase in the Ride-In package price but I'm sure we can make it worth the extra few dollars. Please, lets all give the Best Western Alpine Lodge a chance to show us their stuff and continue our tradition of the most fun filled Ride-In in the Midwest. You will find all the information about the Ride-In in this issue.

Let it snow, let it snow, let it snow. I am still singing.

Be Safe!

Mo Means

International Snowmobile Hall of Fame

The International Snowmobile Hall of Fame on it's 14th anniversary year will induct three very deserving and committed individuals

These inductees will join the memoire's of 53 other inductees on display at ISHOF's Museum, located in the Swampsiders Snowmobile Club House, North of Bovey, Minnesota.

Trail and Program Developer. Ontario Federation of Snowmobile Clubs (OFSC) nominated Don and Charlotte Haynes for their dedication to the OFSC. As a family working together, Don and Charlotte Haynes have been a moving force since 1976 in the sport of snowmobiling, along with implementing Ontario's Operator Safety Training Program for 20 plus dedicated years.

Inventor, Manufacturer. A nomination from the corporate side of being involved with ISHOF's mission was presented by the family of Richard E. Harrison. Mr. Harrison from Crosby, Minnesota, a inventor and manufacture of the Snowmobile we all knew as

the Scorpion/Trail-A-Sled. from 1957 to 1975, some of his designs are currently in use on sleds we ride today.

Publisher and Journalist. South Dakota's Snowmobile Association nominated Marilyn Ruediger, from Spearfish South Dakota. Marilyn's involvement with snowmobiling began in 1967, and continues today. During the 1970's Marilyn become active with her State Snowmobile Association which led Marilyn to become the editor of South Dakota Snowmobile Association's newspaper, called the Sno - Plainsman for 20 plus years.

The International Snowmobile Hall of Fame would like to thank the individuals and organizations for their continued cooperation and enthusiasm in being part of our mission.

This years nominees will be inducted into the International Snowmobile Hall of Fame on February 22, of 2003. Ceremony will take place at the Sawmill Inn, located in Grand Rapids, Minnesota.

**There's lots of snow...
are you ready to go? Better have a Triton.**

Call for your nearest dealer

TRITON
ALUMINUM TRAILERS

Trailite Sales Inc.
800-448-7922 • www.trailite.com



the Intrepid Snowmobiler

CRAIG NICHOLSON

Telling the Truth About Snowmobiling

There are many misconceptions about snowmobiling and the environment. False impressions are often fueled by inaccurate or out of date information from extreme environmental groups and media reports. To counteract these, it is important for each snowmobiler to know the facts and to tell the truth about snowmobiling at every opportunity.

While snowmobiling may seem prolific, the total surface area actually occupied by snowmobile trails in North America is approximately equivalent to the space occupied by one medium urban center. For instance, the roads used by snowmobiles in Yellowstone Park amount to about 1% of its total area.

So snowmobile trails, where the vast majority of riding occurs, occupy only a tiny speck of our total land mass, and are used by snowmobiles three

months a year or less. What's more, cross country and mountain riding only account for a very small portion of all the kilometres snowmobiled in North America each winter, and again, these snowmobilers access only a small fraction of our total back country regions.

About 140,000 snowmobiles were sold in the U.S. in 2001, compared to 16 million automobiles. Which do you think causes more pollution? Snowmobiles operate for only about three months per year, while vehicles are year round. Figures extrapolated from a 1996 University of Minnesota study, and compiled by snowmobile journalist C.J. Ramstad, indicate that the 1.3 million snowmobiles then operating in the U.S. consumed about 41.5 million gallons of fuel annually. But 1996 U.S. Department of Transportation statistics for all road vehicles (including locomotives and over the road combination semi-trailer rigs) show consumption of 146 billion, 676 million gallons of fuel each year, about 3,534 times more than all snowmobiles combined. So snowmobiles accounted for only .032% of the total U.S. motor fuel burned annually at the time of these reports.

New testing procedures for snowmobile engine emissions, recently approved by the U.S. Environmental Protection Agency, have compelled that agency to decrease snowmobile emissions estimates by as much as 335% from its previously published numbers. This reduction confirms that snowmobile emissions are hardly significant in the big pollution picture for the internal

combustion engine. Thus, a recent attempt in the U.S. to close national parks to snowmobiling has not succeeded, in large part because the rationale was based on faulty data.

Unfortunately, many environmental groups and media still continue to quote the old, out of date numbers derived from testing procedures that have now been proved invalid and inaccurate. Meanwhile all snowmobile manufacturers have agreed to comply with a further 30% reduction in hydrocarbon and carbon monoxide emissions by 2006. With all of this in mind, compare today's impact of snowmobiling to that from the unregulated pollutants emitted daily by the thousands of flights that take off from airports across North America...

Technological advances have reduced snowmobile sound levels by 94% over the past 30 years. Today, it would take 256 current sleds revving together at full throttle to equal the sound output from one of those early machines. In fact, a modern sled puts out a comparable level to an average pick up truck. Sound reduction will continue to improve even more as more 4-stroke snowmobiles hit the snow and manufacturers introduce other new sound abatement technologies.

Until next time remember that snowmobilers care about the environment too.

Craig Nicholson is a regular contributor to Snow Goer, Canada's Snowmobiling Magazine. The Intrepid Snowmobiler also appears on radio and on Snowmobiler Television. The opinions expressed are solely those of the author.

NEW

USED & PARTS

AL'S SNOWMOBILE PARTS WAREHOUSE

World's Largest in Used Snow Parts

All Makes 1964-2003 Snow & ATV Parts Shipped Worldwide

Cylinder Boring, Resleeving, Replating Crank Repair

802-487-1000

Call for a Free Catalog or Shop Online

AlsSnowmobile.com or ATVparts.com



December 2002

A Very Special Thanks

When a non-profit organization like the ISA puts on an event like our Winter Sports Show, many times we must go to local clubs and business for support. This year, as in many past years, these clubs and businesses stepped up to participate in our show. The ISA Board of Directors would like to thank everyone for their continued support and list them here for the recognition they deserve.

Department of Natural Resources
 Tractside Die cast
 Eastern Indiana Snowmobile Club
 Snow Drifters of Hamilton Co.
 Liberty Mutual Insurance Group
 Taquamenon Area Civic Center
 Easter Seals
 International Snowmobile Association
 Michigan Snowmobile Association
 Gaylord Area Convention & Tourism
 BJ's Sales
 Rochester Polaris
 Shortsleve's Motor Sports
 Reynolds Farm Equipment

Mike King's Heating & Cooling
 Silver Sabre Repair
 R. T. Sales Inc.
 Trailite Sales
 Yamaha
 Arctic Cat
 Ski-Doo
 Planet Power Sports
 Bayview Sun & Snow
 Greenfield Motor Sports
 Bretz Sales & Service Inc.
 Robert's Rock Climb
 Polaris
 Deak Thornton Racing Enterprises

In the sport of snowmobiling, not only do we need the support of generous businesses and clubs, we must support them in return. When everyone works together and understands each other's need without one entity feeling used, the sport of snowmobiling we enjoy so much, will grow and prosper. The ISA asks that you read this list and check out the ones in your area. By the way, while your there, tell them thanks. **ISA Board of Directors**

PLANET POWERSPORTS
 YOUR MOTORSPORTS SUPERSTORE!

EVERYTHING
ski-doo
NOTHING IS LIST PRICED!

BOMARDIER
 There's Nothing Like It!

PLANET POWERSPORTS
 647 E. Chicago Rd. or US-12 Coldwater, MI
 PH# 517-278-5557 FX# 517-278-6576
 Hours: Mon - Fri 9a to 7p, Sat 9a to 5p, Sun 11a to 4p
 OPEN 7 DAYS

You drive one of *the best* tow vehicles...

You have some of *the best* toys...

Wouldn't you want *the best* trailer?

Call
Trailite Sales

Also check out the
Renegade 7' wide trailer
 (available in 2, 3 & 4 place)

For your nearest dealer call 800-448-7922 or www.trailite.com



Polaris 2003 Cross Canada WOW Relay Scheduled

Ride will raise awareness and funds for breast cancer research while encouraging increased participation by women in snowmobiling.



WINNIPEG, November 18, 2002 — With nearly 50 years of history, memories and great recreational vehicles under its belt, Polaris is proud to be the official host of the 2003 Cross Country Way Out Women Relay, January 11 to March 1, 2003.

Recognizing the growing number of women involved in snowmobiling, Polaris is excited to be a part of this event which encourages women to get out and get involved in this great winter time activity. What's more, the WOW Relay will raise both awareness and funding to help find a cure for breast cancer.

With donations being accepted for Breast Cancer Research both before and during the ride, participants will start in St John's, Newfoundland and travel to Squamish, British Columbia. Three selected women from each province will travel across their province by snowmobile and turn over the sleds to the next province at or near the provincial borders.

Aside from the featured women riders, everyone is welcome to register for a pledge form and join the ride on their own snowmobile. Pledges can also be collected by those who choose not to ride along, and all will be eligible for a brand new 2003 Polaris 550 Indy Classic's Snowmobile. For every \$250.00 collected, participants will receive a chance to win. Employees

of Polaris, Canadian Breast Cancer Foundation and sponsors are not eligible.

As the ride progresses across the country, VIP riders will be asked to join the WOW team on a sled provided by Polaris for a short portion of the ride through their respective local areas. Women involved with Breast Cancer Research, breast cancer survivors, media personnel and political leaders committed to finding a cure for breast cancer will be invited to participate in the VIP ride.

"This is a great opportunity for snowmobile enthusiasts to team together to fight this devastating disease," said Penny Mahon, Ride Coordinator for the WOW Relay. "A cure must be found."

According to statistics an estimated 20,500 Canadian women this year will be diagnosed with breast cancer and 5,400 will die from it. Breast cancer also occurs in men but is very rare. An estimated 140 Canadian men will be diagnosed with breast cancer this year.

"The wife of one of our co-workers at Polaris has been recently diagnosed with breast cancer and so this ride has really taken on a personal side for us," said Gisele Remillard, also a ride coordinator for the Cross Canada WOW Relay.

Polaris would like to thank these sponsors for helping to make this ride possible: Supertrax International, HFC Retail Services, Choice Hotels, Elite Communications, Globalstar, Uncity Custom Services, Penner

International, Polaris Acceptance Canada, Leamarc Inc., ICI Merchandise Group Inc., Big Freight Systems Inc., Mono Graphics, The Protocom Group, Sunwest Graphics, Snoriders West Magazine, Snow Goer Canada, SnoWest Canada and of course the Provincial Snowmobile Associations and the local Snowmobile Clubs without who's help this relay would not be possible.

Ride information or pledge forms can be obtained from the Polaris 2003 Cross Canada WOW Relay web site at www.polarisindustries.com/2003wowrelay/.

Also check the web site for a complete list of fundraising events on their route. A daily diary will be kept on the web site during the ride. Come on out and join these 30 courageous women on the snowmobile trails near you.

About Polaris

Information about the complete line of Polaris products is available from authorized Polaris dealers or from the Polaris homepage at polarisindustries.com.

Polaris designs, engineers, manufactures and markets snowmobiles, all-terrain vehicles, personal watercraft, Victory motorcycles and the Polaris RANGER for recreational and utility use. The Polaris Professional Series, a line of heavy duty Workmobiles 'targeted at lawn and landscape companies, equipment rental companies and construction operations, marks Polaris' expansion into the commercial equipment marketplace.



December 2002

ISA Board of Directors

PRESIDENT

Mo Means
306 Bond Street
Frankton, IN 46044
765-754-8221 (work)
765-754-1104 (home)
765-754-7631 (fax)

VICE PRESIDENT

Sally Rogers
304 S 3rd Avenue
Jonesboro, IN 46938
765-674-2791 (home)
260-479-2500 x 2887 (work)
ser1249@comteck.com

TREASURER

Greg Robison
1281 Autumn Ridge Court
Indianapolis, IN 46239
317-894-8498 (home)
317-521-7305 (work)
maggie@iquest.net

SECRETARY/WEB MASTER

Barbara Thatcher
1268 Central Avenue
Noblesville, IN 46060
317-228-8701 (work)
317-773-1525 (home)
317-770-9304 (fax)
michaelandbard@insightbb.com

PAST PRESIDENT ADVISOR

Deak Thornton
18050 Shively Road
Bremen, IN 46506
574-784-8676 (home)
574-773-7375 (work)
574-773-7573 (fax)
streakndeakon@aol.com

DIRECTORS

John Stegemoller
1471 S. Rd. 300 E
Danville, IN 46122
317-745-2024 (home)
317-403-0485 (work)

Morgan Walden
3660 W. 350 S
Kokomo, IN 46902
765-883-4767 (home)
765-454-8589 (work)
765-454-4845 (pager)

Bob Thornburg
9770 E. CR 400 N
Albany, IN 47320
765-284-1032 (home)
765-748-4838 (work)

Mike Bookout
7331 N. CR 600 West
Gaston, IN 47342
765-358-4265 (home)
765-358-4282 (work)
765-358-4283 (fax)

Mike McDonald
6536 W. Hazelrigg Rd.
Thorntown, IN 46071
765-436-2572 (home)
765-482-6672 (work)
765-436-2572 (fax)
mcmcdonald@in-motion.net

Ray Shaw
2002 Alexandria Pike
Anderson, IN 46012
765-642-9678 (home)
765-642-9678 (fax)
rshaw68@aol.com

ALTERNATE DIRECTORS

Len Neisler - 1st Alt
10120 Beresford Court
Noblesville, IN 46060
317-915-0249 (home)
317-469-9999 x 243 (work)
317-469-2500 (fax)
317-507-5436 (cell)
lenneisler@cs.com

Jon Didier - 2nd Alt
635 Lane 275 Jimmerson Lake
Angola, IN 46703
260-833-2739

John Reecer
5148 E. County Rd. 50 S.
Greentown, IN 46936
765-628-7090

Russ Rogers
782 E. 425 N
Rochester, IN 46975
574-223-4162

TRAIL COORDINATOR

Gary Goodrich
11133 River Oaks Lane
Oscedla, IN 46561

ISA SAFETY COORDINATOR

Tim Colip
317-462-5172

MEMBERSHIP COORDINATOR

Tammy Means
765-754-8221 (home)

ISA E-mail: isa@indianasnowmobilers.com • ISA Website: www.indianasnowmobilers.com

**Schnelker
Marine INC.**
Est. in 1964

Vern Schnelker
- Winner Polaris Industries -
Best of the Best Technical Service Contest

640 Lincoln HWY. E.
New Haven, IN 46774

www.schnelker.com

e-mail: 4fun@schnelker.com

Bus. Hours	
M,W	8-5
T,TH	8-7
F	8-6
Sat.	8-Noon

- SNOWMOBILES
- ALL-TERRAIN VEHICLES
- PERSONAL WATERCRAFT
- RANGER

POLARIS

RIDE THE BEST

"Master Servicing Dealer"
Parts shipped UPS

1-888-749-BOAT
260-749-8909

**Pine-Cone
Accommodations**
Gaylord, MI
Lodging
* Condominiums
* Cabins * Homes

- * 3 Month Vacation Rentals Available
- * Close to Trails
- * Rentals with Garages, Fireplaces & Game Rooms



PINE-CONE ACCOMMODATIONS

Toll Free 866-731-1887

pineconeacc@core.com

www.pineconeaccommodations.com



International Snowmobile Manufacturers Association

Ed Klim

Responsible, Safe Snowmobiling ALWAYS a priority

Snowmobile safety has always been a high priority with the manufacturers and organized snowmobiling. Many years ago the manufacturers worked with state and provincial associations and snowmobile administrators in creating the very first Safety Training Handbooks and developing snowmobile safety classes to be conducted by volunteers and DNR safety trainers.

Today, the manufacturers, along with the snowmobile community, are more involved than ever in making snowmobile safety a top of mind

awareness issues for all snowmobilers. Beginning in 1995 the snowmobile manufacturers initiated the Safe Riders! You make snowmobiling safe safety campaign. Since its inception, the safety program has been widely endorsed and supported by snowmobile enthusiasts. Today, over 80% of snowmobilers, whether they are members of a state or provincial association or not, recognize the Safe Riders! logo and understand the campaign position statements. The campaign is a very straight forward campaign that brings to the forefront the need to analyze risks and not

take improper risks while snowmobiling. The position statements are clear and understood and are best defined in reviewing the statements on each of the safety posters that have been designed and distributed by the manufacturers. Those position statements are:

- a. Snowmobiling and alcohol don't mix, don't drink and ride
- b. Know before you go! Always check local ice conditions
- c. When night riding, slow down! Expect the unexpected.
- d. Ride safe, stay on the trail. Respect private property.
- e. Know the risks, and be prepared. And make every trip a round trip.
- f. Cross with care, don't become roadkill
- g. Snowmobiling is a fun family sport, join us today.
- h. Ride smart, ride right, stay in control
- i. One is the loneliest number, never ride alone
- j. Promote your right to ride, get involved
- k. Smart riders are safe riders, take snowmobile safety training

These position statements are all contained within the 11 separate,

Pure Speed!

YAMAHA

Low Interest Rates • All New Models in Stock

RT SALES
Parts, Clothing, Accessories
469 Exit 19 - US 30E, E. Zulu, IN 46773
E-mail: rtsales@mail.fwi.com
260-623-6355
Serving you for 30 years

Bretz
SALES & SERVICE

**Master Servicing Dealer
Star Dealer**

POLARIS
ATV & Snowmobiles

**Extended Hours
to Better Serve Your
Snowmobile Needs!**

Monday thru Friday - 9 am to 8 pm
Saturday - 9 am to 5 pm

Parts Shipped UPS Withing 24 Hours

(765) 964-7224
(765) 964-3491 fax

739 West Chestnut • Union City, IN 47390
www.bretzsalesservice.com

Michigan Trail Permits available



December 2002

four-color posters designed to attract attention and help send the message clearly to snowmobilers and other recreationists. The posters are distributed to state and provincial associations, safety trainers, sheriff's offices, Chamber of Commerce, Convention and Visitors bureaus and others in hopes that they will be prominently displayed and help communicate the messages to the snowmobiling public.

The manufacturers have encouraged a consistent message to be distributed to snowmobilers enabling the message to be better understood by snowmobilers from all states, provinces and all walks of life. The snowmobile community understands the synergy that occurs when we all sing from the same sheet of music, and using the Safe Riders! logo and the related campaign messages helps us all be better safe snowmobilers.

The manufacturers actively encourage safety training programs and work through the Safe Riders! campaign to support those efforts.

The campaign material includes not only the posters and the snowmobiling fact book, but also the Safe Riders! video and TV and Radio ready public service announcements. The video serves as an excellent visual support piece for safety training and can also be used at home to familiarize guests and family members of the importance of safe snowmobiling and key important related issues.

In the past, our critics would ask, "What is the snowmobile community doing to promote safety?" For years now we have responded with an explanation of our Safe Riders! safety campaign to promote safe, responsible, snowmobiling behavior.

continued on page 20

Snowmobilers Counting Days, Weeks Until Winter

Jenny Kopaceski

Muncie- A group visiting the Horizon Convention Center this weekend is counting the days until the first snowfall.

This weekend, the Snowmobilers Association (ISA) reconvened for the third year at the Horizon Center to promote family snowmobiling and riding safety. The convention, which originated in Muncie, also travel to South Bend and Fort Wayne.

Besides displaying new models, the events offered a peek into what's in store for snowmobile accessories. Some products included snowmobile suits, saddle bags and plastic skis for vehicles.

"There's almost no end to what you can customize," said Mo Means, President of the state association. "It's unlimited what you can do."

Means added that the convention also supported local snowmobile organizations.

"We wouldn't even be here if it weren't for local clubs and dealers," he said. "We want to help them thrive and grow."

So far, the ISA has lived up to its undertaking. "The convention has helped the growth of our club considerably," said Mike Bookout, President of the Eastern Indiana Snowmobile Club.



**CHAMBER OF COMMERCE
WELCOME SNOWMOBILERS
715-476-SNOW
24 hr. trail report**

Located in Historic Iron County - the heart of the Northwoods. Offering 450 miles of groomed snowmobile trails and 214 lakes for ice fishing.

Explore 377,900 acres of forestland for hunting and cross-country skiing. Near downhill ski areas. A sportsman's and photographer's paradise.

**Join Us in Winter Wonderland
For a free vacation guide**

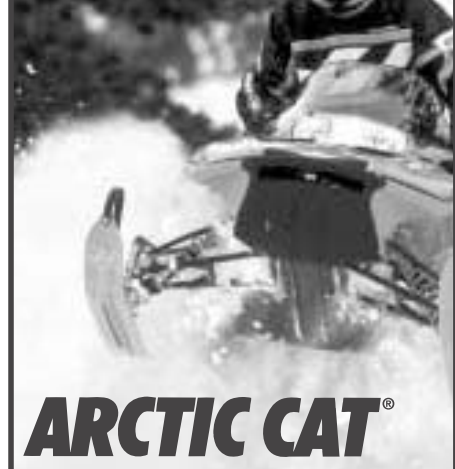
Please contact:

Mercer Area Chamber of Commerce
5150N Hwy 51 • Mercer, WI 54547

715-476-2389

web site- www.mercercc.com
email: info@mercerc.com

**Pure
Fun!**



ARCTIC CAT®

Low Interest Rates • All New Models in Stock

RT SALES

Parts, Clothing, Accessories

469 Exit 19 - US 30E, E. Zulu, IN 46773

E-mail: rtsales@mail.fwi.com

260-623-6355

Serving you for 30 years

CALENDAR OF EVENTS

December 2002

Sunday	Monday	Tuesday	Wednesday	Thursday	Friday	Saturday
1 Michigan State Trails Open	2 Lakeland SMC Mtg. 6 pm, 8809 E. Epworth Forest Rd, North Webster, IN	3 Potawatomi Snowmobilers Mtg. 7:30 pm, Sunset Inn, Angola, IN Hoagland Blizzard Blazers Mtg. 7 pm, Hoagland Pavilion, Hoagland, IN	4	5 Elkhart County SMC, 6:30 pm, Eby Pines, Bristol, IN	6	7 White Star Snowmobile Auction, Inc. Bronson, MI 9 am
8 Salamonie Trailmasters Mtg. 2-4 pm. For location, call 765-674-2791.	9	10 Cass SMC Mtg. 7 pm, T-Bones & T-Roys, Royal Center, IN	11 Eastern Indiana SMC Mtg. 7:00 pm, Welliver's, Hagerstown, IN	12	ISA Ride-In Planning Meeting	
15 ISA Ride-In Mtg.	16 Bucks & Does SMC Mtg. 8 pm, The Trion New Haven, IN	17	18 Hancock Co. SnowRoamers Mtg. 6:30 pm, Grace Hall on US 40, Greenfield, IN Winter Wan-Derers SMC Mtg. 7:00 pm, Wildwood Acres Clubhouse, Hartford City, IN	19 Snowdrifters of Hamilton Co. Mtg. 7:30 pm, Claude & Annie's, Noblesville, IN Central Indiana SMC Mtg. 7 pm, Pizza Hut, US 31 N, Kokomo, IN	20 South Bend SMC Mtg. 7 pm, Club House on the trail on Rice Rd. just off SR 2, South Bend, IN	21
22 First Day of Winter	23	24	25 Winter Wan-Derers Mtg. Wildwood Acres Clubhouse, Hartford City, IN Christmas Day	26	27	28
29	30	31 New Year's Eve				<i>Note: December 1st is the deadline for material for the December issue of the Hooiser Snowmobiler</i>

January 2003

Sunday	Monday	Tuesday	Wednesday	Thursday	Friday	Saturday
<i>Note: January 1st is the deadline for material for the December issue of the Hooiser Snowmobiler</i>			1 New Year's Day	2 Elkhart County SMC, 6:30 pm, Eby Pines, Bristol, IN	3	4 White Star Snowmobile Auction, Inc. Bronson, MI 9 am
5	6 Lakeland SMC Mtg. 6 pm, 8809 E. Epworth Forest Rd, North Webster, IN	7 Potawatomi Snowmobilers Mtg. 7:30 pm, Sunset Inn, Angola, IN Hoagland Blizzard Blazers Mtg. 7 pm, Hoagland Pavilion, Hoagland, IN	8	9	Snowdrifters – Eagle Bluff Condos – Hurley, WI	
Snowdrifters - Jan 3rd to 6th		Winter Wan-Derers – Bay Mills Resort – Brimley, MI - Jan 5th to 10th				
12 Salamonie Trailmasters Mtg. 2-4 pm. For location, call 765-674-2791.	13	14 Cass SMC Mtg. 7 pm, T-Bones & T-Roys, Royal Center, IN	15 Hancock Co. SnowRoamers Mtg. 6:30 pm, Grace Hall on US 40, Greenfield, IN Eastern Indiana SMC Mtg. 7:30 pm, Ryan's Family Steakhouse, Hagerstown, IN	16 Snowdrifters of Hamilton Co. Mtg. 7:30 pm, Claude & Annie's, Noblesville, IN Central Indiana SMC Mtg. 7 pm, Pizza Hut, US 31 N, Kokomo, IN	17 South Bend SMC Mtg. 7 pm, Club House on the trail on Rice Rd. just off SR 2, South Bend, IN	18
19	20 Bucks & Does SMC Mtg. 8 pm, The Trion New Haven, IN Martin Luther King, Jr's Birthday	21	22 Winter Wan-Derers Mtg. 7pm, Wildwood Acres Clubhouse, Hartford City, IN	23	ISA Ride-In – Gaylord, MI - Jan 16th to 19th	
ISA Ride-In		Eastern Indiana SMC – Lake Elliott, Canada - Jan 19th to 25th				
26	27	28	29	30	31	Central SMC & Snow Drifters - Shea Lodge



December 2002

That's a Gaylord Kind of Getaway

By Julie Kettlewell

Can you smell it? You know...that crisp scent of winter air just before the first fresh snow, that incredibly clean fragrance that only a true winter lover would notice. There's a good chance anyone who has spent enough time in the Great White North is probably shivering a little just thinking about it.

To the avid winter sports fan, a heavy snowfall is probably much the same as hitting the lottery, minus the financial gain, of course. But the excitement is surely paralleled. News of accumulating precipitation of the snowy kinds might cause a body to don helmet and suit just to get a feel for the first ride, or start up the machine just to hear it roar and catch a whiff or the exhaust that is ambrosia to the eager sledder.

Up in Gaylord, Michigan, the frosty air is as refreshing as an ice cold beer on a hot day, and the snow never seems to be in short supply. Located near the Tip of the Mitt in the heart of beautiful Northern Michigan, the town of Gaylord is always bountifully blessed with the White Stuff. Some may even see the northerners as a bit spoiled, in that toward the end of a long, white winter, they find themselves pining to pack away the heavy suites and polish up the golf clubs. But that's only because the winter seems so endless, which is, to venture a guess, what every snowmobiler dreams of.

That kind of dream really does come true as you travel north on I-75 and find yourself crossing the Otsego County line. That's when you'll see hills that are a bit higher, trees that are little taller, a landscape that is artistically etched, and trails that approach infinity. And in the Gaylord Area, quality and quantity are a given. Visitors have nearly two dozen motels, hotels, and resorts from which

to choose, and nearly twice that many eateries. But that's just the fluff. The real meat and potatoes is in the easy accessibility to hundreds of miles of trails.

In January 2003, the Indian Snowmobiler Association (ISA) will again return to Gaylord for the annual Ride-In, and the ISA Director Mo Means is excited by the prospect. Mo brought the family north a few weeks ago to scope out the area and choose what he thought to be the perfect location for the big weekend. His search stopped short at the Best Western Alpine Lodge, which sits just off I-75 exit 282 on Gaylord's main drag. Some may recall this location as a Holiday Inn, but those days have passed and today the weary traveler would walk in to find new owner, a new logo, and newly remodeled guest rooms and open areas. It's been a facelift of the most comfortable kind and when you're talking location, the Best Western couldn't be in a better place—smack at the beginning of the web of trails that covers the North Country.


Sounds perfect? Pretty close. This is almost-perfect package is completed in the most tasteful way, as Best Western owners managed to snag one of the area's finest chefs to handle the food and beverage end of the business. Chef Randy Troy and wife, Martha, took over the operation in July of the year, and have created a knock-your-socks-off menu for their guests. They took the name Tyrokan Restaurant & Lounge, and have quickly gained a large following, in addition to serving as the exclusive caterer for all functions at the hotel. In January, the ISA directors and membership are in for a very enjoyable and worthwhile experience on the trails, in the hotel and at the table.

It just may be that Gaylord is the true

north of snowmobiling, but it's not just the snow and amenities that lure folks here. The Gaylord area is rich with historic beauty and hometown hospitality, and also offers a wide variety of leisure activities off the trail, plus great opportunities to shop and browse, downtown and beyond.

To pack it into a nutshell, a trip to Gaylord is well worth the ride. It's a getaway of the most exceptional kind, as anything and everything is at your fingertips, and it's the kind of getaway that makes one yearn to return.

Snow. Fresh Air. Good People. Good Times. That's a Gaylord kind of Getaway.



The Place You've Been Looking For

- ISA Discount
- Chairman's Award For Excellence
- Direct Trail Access
- Trailer Parking
- Refrigerators in All Rooms
- Indoor Pool/Whirlpool
- Complimentary Continental Breakfast

There You Go!

1201 W. Main
(989)732-2200 • (800)952-9584



Grass Dragging for Beginners

Tired of makin' payments on that new sled and watching it collect dust for 8 months out of the year? Are you one of those guys that talks sleds when it's 90 degrees outside & your sittin' at the pool? Well, maybe it's time you got a little more use from your toys! I'm talking drag racing! On the grass. In the summer. Right on up till the fall.

Getting started in grass drags is fairly inexpensive, (as compared to other forms of racing), and won't set you back too much. The first thing you'll need to get started is an International Snowmobile Racing* (ISR) Yearbook (rulebook). Once this is obtained, you'll have a better idea of what you can and can't do to your sled in the class you choose to compete in.

Proper safety equipment is a must, and ISR rules require that you wear it at all times you are on your sled and it is in motion, (even in the pits). A full coverage, SNELL rated helmet is first on the list. Upper body protection, such as a TekVest, is also required. (Moto-X vests do not conform.) Gloves and shin guards are also required. Your snowmobile will also be required to have a working kill-switch and safety tether.

Building your dragster:

The first thing that you'll want to do is add some extra wheels to your slide rails. I replaced all stock wheels with larger ones, (6mm bigger), and added three extra sets on the rail, (also the larger size). If your budget permits, (and you have

room between the slide rails), I highly suggest installing as many 2-3/4" wheels on axles as possible. These are available from aftermarket companies such as Wahl Bros. Racing. At the same time, I removed my hyfax and thinned them down to about an 1/8" thickness. This will help to take weight off the track clips. The key to success is eliminating as much friction as possible.

The next step is lowering your rear suspension. This can be done easily by compressing the springs and chaining them in place. First set your springs on the lightest setting. In most cases, the chain will go around the torsion spring and one of the lower scissor arms. ISR rules require double chains/straps for safety, and a minimum of 2" of travel with rider on board. Don't forget to tighten the front limiter strap also. You want the track to be almost even front and rear.

The front suspension can be lowered by removing as much pre-load as possible from the shocks, and installing longer shock mount bolts top and bottom. With the shocks compressed, a length of chain can then be slipped over the bolts and held in place with a nut and washer. Remember to keep to the 2" rule. Ski carbides need to be removed and replaced with regular steel wear bars.

As a general rule, if you set your ski's on a ZW", your track should be level while sitting on your garage floor. Your stock track will be fine for getting started. Studs are almost a necessity, and chisel points are best for grass. I've found through trial and error that it doesn't pay to skimp on the proper parts. Putting off buying those larger, (or extra), wheels till next time can cost you a race. Any edge that you can gain on your competition will move things ever

continued on page 29

All Seasons Resort



800-806-1580
231-258-0000

760 U.S. 131 South
Kalkaska, MI 49646

Snowmobile direct from our lighted parking lot to hundreds of miles of scenic groomed trails.

We are proud to offer:

- Oversized Rooms
- In-Room Jacuzzis
- Kitchenettes
- Indoor Pool and Hot Tub
- Complimentary Continental Breakfast
- Fitness and Game Room
- Group and Corporate Discounts



Visit our website: www.kalkaskaallseasons.com



December 2002

Your Government Addresses

PROTECT YOUR RIDING RIGHTS: CONTACT YOUR ELECTED OFFICIALS.

THE UNITED STATES
SENATE

SENATOR EVAN BAYH

463 Russell Senate Office Building
Washington, D.C. 20510
(202) 224-5623

Fax: (202) 228-1377

E-mail: senator@bayh.senate.gov

web: bayh.senate.gov

District Office: Indianapolis

District Phone: (317) 554-0750

SENATOR RICHARD LUGAR

306 Senate Hart Office Building
Washington, D.C. 20510
(202) 224-4814

Fax: (202) 228-0360

E-mail: senatorlugar@lugar.senate.gov

web: lugar.senate.gov

District Office: Indianapolis

District Phone: (317) 226-5555

America's Largest Since 1974

Snowmobile & ATV Auctions

First Saturday of Every Month Year Around

9 AM Parts; 10 AM Trailers
10:30 AM Sleds/ATVs

Over 5000 Sold Every Year

BUY or SELL

All information and auction price reports at:
www.snowmobileauction.com

Phone

517/369-1153

You can Buy or Sell

White Star Snowmobile Auction, Inc.
on US 12, East of Bronson, Michigan 49028

HOUSE OF REPRESENTATIVES

THE HONORABLE PETER J. VISCLOSKY

U.S House of Representatives
2313 Rayburn House Office Building
Washington, D.C. 20515
202.225.2461

THE HONORABLE DAN BURTON

U.S House of Representatives
2185 Rayburn House Office Building
Washington, D.C. 20515
202.225.2276

THE HONORABLE MIKE PENCE

U.S House of Representatives
1605 Longworth House Office Building
Washington, D.C. 20515
202.225.3021

THE HONORABLE BRIAN KERNS

U.S House of Representatives
226 Canon House Office Building
Washington, D.C. 20515
202.225.5805

THE HONORABLE TIM ROEMER

U.S House of Representatives
2352 Rayburn House Office Building
Washington, D.C. 20515
202.225.3915

THE HONORABLE JOHN HOSTETTLER

U.S House of Representatives
1507 Longworth House Office Building
Washington, D.C. 20515
202.225.4636

THE HONORABLE MARK SOUDER

U.S House of Representatives
1227 Longworth House Office Building
Washington, D.C. 20515
202.225.4436

THE HONORABLE BARON HILL

U.S House of Representatives
1208 Longworth House Office Building
Washington, D.C. 20515
202.225.5315

THE HONORABLE STEVE BUYER

U.S House of Representatives
303 Canon House Office Building
Washington, D.C. 20515
202.225.5037

THE HONORABLE JULIA CARSON

U.S House of Representatives
1339 Longworth Office Building
Washington, D.C. 20515
202.225.4011

ALGER FALLS MOTEL

16 AAA Units

1 AAA Housekeeping Unit

At Door Parking

Direct Dial Phones

Located in Hiawatha National Forest-two miles east of Munising. Trails start at your door! We are located outside the city limits so there is no curfew. Snowmobile parts available on premises. Heated garage and recreation room available with pool table, stove, refrigerator and coin operated laundry. Most rooms have in-room microwave & refrigerator.

M-28 East - Munising, MI

(906) 387-3536

www.algerfallsmotel.com

Bob Thornburg, Sr.

Hey Snowmobiler of the Year – how did your snowmobile make it on the front cover the Wisconsin Snowmobile News and not you? You can run but you can't hide!





Rotax® 2-TEC™ SDI engines. Up to 25% better fuel economy*!

To see how far you can go with a new 2-TEC Semi-Direct Injection engine visit www.rotax.2tec.ski-doo.com.



ski-doo[®]

ROTAX 2-TEC **THERE'S NOTHING LIKE IT.**



Never venture out alone. Always plan your ride before you go out. *Compared to Rotax 600cc and 800cc Series 3 engine.

INDIANA SNOWMOBILERS ASSOCIATION

Winter Sports Show



Jay McLaughlin, magician



Watch Pit Stop Shootout

Diana Goodwin Bayview Sun and Snow



Janet Reecer relaxing at the ISA show



Pit Stop Shootout



Paul Beachnau, Gaylord Tourism





Nice hat Mo



CASS Snowmobile Club of the Year



Previous Snowmobilers of the Year



Show me the money

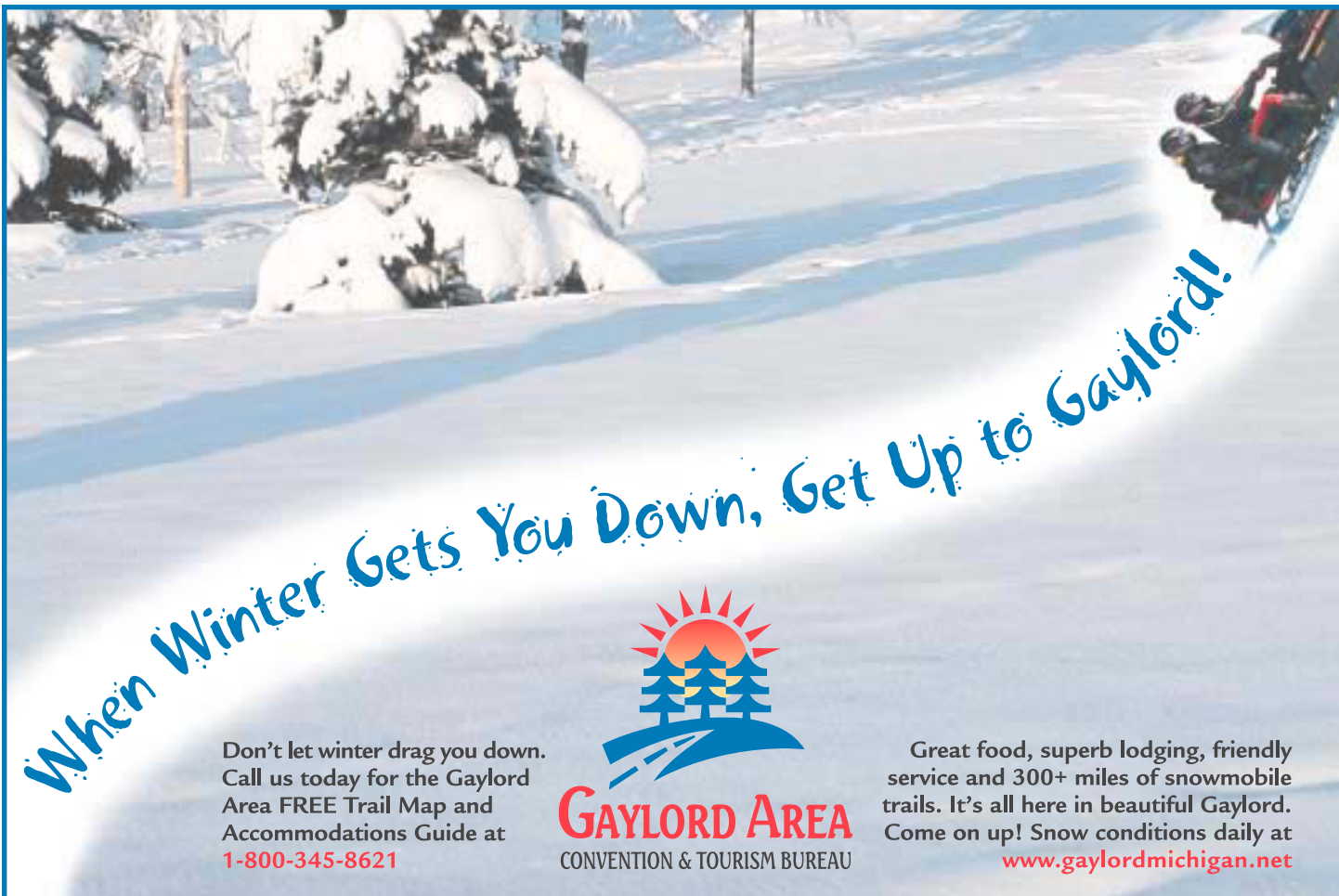


No - another huh?




John, are waving or asking for help?





When Winter Gets You Down, Get Up to Gaylord!

Don't let winter drag you down. Call us today for the Gaylord Area FREE Trail Map and Accommodations Guide at **1-800-345-8621**



GAYLORD AREA
CONVENTION & TOURISM BUREAU

Great food, superb lodging, friendly service and 300+ miles of snowmobile trails. It's all here in beautiful Gaylord. Come on up! Snow conditions daily at www.gaylordmichigan.net



COWBOY VILLAGE
RESORT
AT TOGWOTEE

Snowmobile the Continental Divide, Yellowstone & Jackson Hole at the West's Premier Snowmobile Resort

800-543-2847
For Video or Information
www.cowboyvillage.com

Responsible, Safe Snowmobiling...

continued from page 11

The manufacturers are steadfast in their support of safe snowmobiling and in particular, the Safe Riders! campaign.

The safety campaign recognizes that many of the accidents that occur while snowmobiling occur because a rider has consumed alcohol affecting reaction time and judgement. That reaction time and judgement affects speed, cornering, good judgement and decision-making abilities and over confidence. In addition to understanding the need for safe behavior, the manufacturers understand and support the need for properly marked and properly groomed trails that afford the best possible riding environment for snowmobilers.

The manufacturers invite all snowmobilers to participate in the upcoming International Snowmobile Safety

Week (January 12-18, 2003). Copies of the Safety Week Campaign Action Manual are available from the ISMA office to aid clubs or snowmobile related businesses in sponsoring safety events and how to plan for Safety Week.

The campaign is continually expanding to better serve the snowmobiling public and all of the materials are readily available through the ISMA office free of charge. To obtain an order form one can visit the Safe Riders! web site at www.snowmobile.org. When you are at the web site you will also be able to obtain a great deal of current information on snowmobiling. If you haven't been there in a while you will find new information, poll questions, an e-mail list to join for breaking news related to the sport and Safe Riders! materials that can be downloaded for your immediate use.



December 2002

American Decal



A young man here in Washington has designed and printed the attached decal. It is red, white and blue and says "Proud To Be An American Snowmobiler" across the bottom. It is 7-1/2" long X 3-1/2" high. I took a picture of it with my new digital camera so hope it turns out OK. They are \$2.50 each. If you would like to order some, please send a self-addressed, stamped envelope to Curt Gardner, 17537 - 237th Place N.E., Woodinville, WA 98072. (Remember to add extra postage. I received 10 of them and the postage was \$.83) His email: luvsnow612@cs.com

DEPARTMENT OF NATURAL RESOURCES

Snowmobile Information



To find out if the trails are open and what the conditions are, the Indiana Snowmobile Association maintains the snowmobile hotline 219-679-4006.

Trail conditions are available 24 hours a day, after the first significant snowfall. Hotline is updated as conditions change. Maps, snowmobile information, and registration forms are also available online at www.in.gov/dnr/outdoor

This Information Provided By:

Dale Brier – dbrier@dnr.state.in.us
Streams and Trails Specialist
Department of Natural Resources
Division of Outdoor Recreation
402 W. Washington Street W271
Indianapolis IN 46204
317-232-4070
www.in.gov/dnr/outdoor

Trail maps are available from:

DNR Public Information
402 W. Washington St, W160
Indianapolis, IN 46204-2739
317-232-4081

Registration and Safety information is available from:

DNR Div of Law Enforcement
402 W. Washington St, C255D
Indianapolis, IN 46204-2739
317-232-4010

Snowmobile program information is available from:

DNR Div of Outdoor Recreation
402 W. Washington St, W271
Indianapolis, IN 46204-2782
317-232-4070
www.in.gov/dnr/outdoor

Low Interest Rates • All New Models in Stock

RT SALES

Parts, Clothing, Accessories

469 Exit 19 - US 30E, E. Zulu, IN 46773
E-mail: rtsales@mail.fwi.com

260-623-6355
Serving you for 30 years

GREED AND ENVY ARE THE UGLIEST EMOTIONS. HERE'S HOW TO BRING THEM OUT IN EACH OF YOUR FRIENDS.

With our counterbalanced triple engines, horsepower is a given. So is handling when you add our exclusive AWS™ V double-wishbone front suspension and FasTrack® Long-Travel Rear Suspension System. For supreme power and handling on any trail, come check out the new Thundercat® or ZRT® 600.

ARCTIC CAT
What Snowmobiling's All About.™



COME IN NOW
for the best deal on an Arctic Cat snowmobile.

GREENFIELD MOTOR SPORTS
317-462-2262

4606 S. 100 E. Greenfield, IN

treadlightly!™ Always wear a helmet and don't drink and ride. ©2001 Arctic Cat Sales Inc. ®™ Trademarks of Arctic Cat Inc., Thief River Falls, MN 56701. (218) 681-4999.

Ski-Doo Bond 007 Snowmobile

In Time Square, New York City for the first time

Montréal, November 1, 2002 — Bombardier's Ski-Doo® MX Z®-REV™ snowmobile will be featured in MGM Pictures and EON Productions Die Another Day*, the latest episode of the widely popular James Bond* movie series, produced by Michael G. Wilson and Barbara Broccoli. The Bond 007 Ski-Doo snowmobile will be showcased for this occasion (Omega, Swatch Group event) on Monday, November 4, in the heart of Time Square NYC.

The Bond producers' choice definitely speaks to Bombardier's ability to produce the most technologically innovative and advanced vehicles on the market, characterized by a highly sophisticated design.

®, ™ Trademarks of Bombardier Inc. or its subsidiaries. * Trademarks of Danjaq LLC, used under license.



ski-doo
2003



BOMBARDIER
RECREATIONAL PRODUCTS

THE FISH & HUNT SHOP

Curtis, MI • Only 1 Hour West of Mackinac Bridge

Snowmobile the U.P. of Michigan

www.fishandhuntshop.com

Toll Free 1-877-586-9531

Open Mon.- Sat. 8 a.m. - 6 p.m. Sun. 9 a.m. - 4 p.m.

**PARTS • CLOTHING
RENTAL PACKAGES**

Close Out
on over 100
New - Used - Rental
Ski-Doo Sleds
in Stock!

SKI-DOO RENTALS

Seney
Fox River Motel
906-499-3332

Manistique
Comfort Inn
906-341-6981

Newberry
Comfort Inn
906-293-3218

St. Ignace
Comfort Inn
906-643-7733

Paradise
Tinkers Pit Stop
906-492-3898



2002-2003 ISA Board Monthly Attendance

Directors	Mar	Apr	May	Jun	Jul	Aug	Sep	Oct	Nov	Dec	Jan	Feb
Mo Means			X		X	X	X	X	X			
Sally Rogers			X		X	X	X	X	X			
Greg Robison			X		X		X	X	X			
John Stegemoller			X				X	X	X			
Morgan Walden			X		X	X	X	X	X			
Mike McDonald			X		X	X	X	X	X			
Ray Shaw			X		X	X	X	X	X			
Bob Thornburg			X		X		X	X				
Mike Bookout			X		X	X	X	X	X			
Alternate Directors												
Len Neisler			X		X	X	X	X				
Jon Didier					X			X	X			
John Reecer							X	X	X			
Russ Rogers							X	X	X			
Past President												
Deak Thornton			X		X		X	X	X			
Secretary												
Barbara Thatcher			X		X	X	X	X	X			

Marquette's Largest Full Service Hotel On the Snowmobile Trail!



1951 US 41 West
Marquette, MI
906-225-1351
1-800-HOLIDAY

Group Packages Available
Nightly Entertainment in My Place Lounge

Indoor Pool, Sauna & Hot Tub

www.holiday-inn.com/marquettemi

\$62.00 Sun-Thurs

or any 5 consecutive nights

\$79.00 Fri & Sat

Welcome ISA New Members

We have 8 new members,

- Kevin & Kim Antrim Frankton, IN
- Brian & Rochelle Beaumont Kokomo, IN
- Todd/Jan Gierke South Bend, IN
- David Moore Muncie, IN
- Brad/Lisa Plett Goshen, IN
- Roger/Jean Prentkowski South Bend, IN
- Quality Inn Gaylord, MI
- Dan/Kathy Wheeler Yorktown, IN



CLUB NEWS

Elkhart County Snowmobile Club

As I write the forecast on the radio is for SNOW! I do trust that is a great sign for all snowmobilers this year. The Elkhart County Snowmobile Club opened up with the winter season with a hot dog roast and meeting at Eby Places in October. We meet for dinner and meeting the first Thursday of the month, October through April. We welcome one and all to join us for just one meeting or join our club.

Our club hotline always has helpful information on it and gives details on work days and meetings. The number is (574) 848-4545. The following is a list of our new officers for this year:

Officers

- | | |
|----------------|---------------|
| President | Tim Yoder |
| Vice President | Jeff Donovan |
| Secretary | Judy Yoder |
| Treasurer | Gary Goodrich |

3 Year Board Members are

- Reggie Stickel
- Barry Lang
- Mark Roher

1 Year Board Members are

- Roy Huber
- Brad Plet
- Tim Bryant
- Nate Miller.

The Elkhart County Snowmobile Club is planning some very exciting trips for

this year's snowmobiling season. The first trip that we are taking will be the ISA Ride In on January 16-18, 2003. The Ride In will be traveling to Gaylord, Michigan. We hope that you can all join us there. We would love to meet some of the areas snowmobilers. Remember the More the merrier when it comes to snowmobiling.

We are also planning a Family ride. The ECSC Family Club ride will be at Cadillac/Wellston, Michigan on February 14 -16, 2003. We will have more information to follow.

And the most exciting events that are in the works are the "Ride In's" that we plan to host. We are getting together three "ride in's". These events will be held on our trails system this year, weather permitting. The dates are planned for January 9th, February 6th and March 6th. Details of these events will be posted on our information hotline. Well, till Next Month, THINK SNOW.

Tim Yoder



Sponsor of



Welcome Snowmobilers!

FANTASTIC STEAKS
Great Pasta Dishes
(906) 387-4067

Every Friday...
The Seafood Spectacular

First Restaurant off Trail 419 6 A.M. - 11 P.M.	M-28 EAST MUNISING, MI 49862	Lounge 4 P.M. - 2 A.M.
---	---	---------------------------



NORTHGATE MOTEL

*The Hub of Snowmobiling
in Michigan on US 41*

Fantastic Summer Paradise

Gorgeous Fall Color
A Winter Wonderland (ave. 250" of snow)
ON GROOMED SNOWMOBILE TRAIL

Snowmobile From Your Door
Downhill & Cross Country Skiing
Open Year Round
 26 Units • Air Conditioned
 MC/Visa/Disc • Touch Tone Phones
 Cable TV • Ample Parking
 Heated Repair Shop
 Microwaves & Frigs in Rooms

1-800-373-7703 • 1-906-337-1000
57900 US-41 North, Calumet, MI 49913



December 2002

CLUB NEWS

South Bend Snowmobilers

The SBSC held our annual Halloween Party October 26th, we had a wonderful evening filled with delicious food, games and contest. One being the costume contest won by:

- First Prize: Morgan Dale
- Second Prize: Austin Hartz
- Third Prize: Kenny Dale

Congratulations to these club children.



We invite you to join our club. Meeting are held the third Friday of the month at our Clubhouse on Rice Road in South Bend, Come and join in the fun. Our purpose is to promote the sport of snowmobiling, to unite area snowmobilers into a strong body with



a strong voice, to foster a spirit of cooperation with Indiana law enforcement and to project a good public image. We are a family oriented club that has been active for more than thirty

years. We have many charitable causes we support nationally and locally. We sponsor safety courses for the public. Club volunteers maintain the longest trail in the state of Indiana the Buffalo Run Trail. We support the state association the ISA with 100% membership. Come and join the fun.



When out this winter remember our club would like to stress to everyone that trail riding is a privilege, not a right. The trail is put on private land by Clubs that volunteer their



time to make the sport of snowmobiling happen. On the flip side this privilege of riding can also be taken away. Don't cut corners or take shortcuts. The trails all staked Where they are for a reason. Even if there is not a "STAY ON TRAIL" sign present, stay on the trail always. If you are not on the trail you are trespassing, this could lead to penalties. A section of trail could be lost by just one landowner not giving permission next year. Stay on the trails, be considerate, be safe and ride sensibly, protect the environment leave tracks not trash.

Merry Christmas to all & hope to see you on the snow.

This months sledding words of wisdom- It's best for one who hits the bottle to let another hit the throttle

Club Reporter
Joseph Lane



Aluminum Bearcat
\$825
8 1/2' x 10' Snowmobile/ATV Trailer

800-348-8541

Trailers By:
HAULMARK
Cargo Mate
United Expressline



2405 Cassopolis St. • Elkhart, IN 46514
1 Mile South of Exit 92, off 80/90

Check out our website: www.msitrailers.com



CLUB NEWS

Snow Drifters of Hamilton County

by Barb Thatcher

<http://members.iquest.net/~cataha>

As I write this I am getting ready for the ISA Snow Show. This will be my first year actually working at the show. I will be helping out the ISA and also with the Snow Drifters booth. By the time you read this the snow show will be over and we will be working hard at getting all of our trip plans finalized. I am sure the snow show was a success; the board members put a lot of work into making sure it is.

The first trip planned (if snow) will be in December. Usually we plan a December trip but it never happens, something called snow doesn't show up. One of our most popular trips will be happening at the beginning

of January to Hurley, WI. We stay in condo's that are on the trail. What a nice area, you have plenty of places to choose to ride. You can stay in Wisconsin or head across the street and go into Michigan. Our third trip will be to Gaylord for the ISA Ride-In. I am sure that will be a full and fun packed weekend. If anyone would like to join us on one of these trips, please contact us; you are more than welcome to come along.

I hope everyone had a good Thanksgiving and I wish everyone a Merry Christmas and Happy New Year's.

Does this sound familiar?

WHO DIDN'T DUN'IT?

This is a story about four persons named Everybody, Somebody, Anybody and Nobody. There was an important job to be done and Everybody was asked to do it.

Everybody was sure that Somebody would do it. Anybody could have done it, but Nobody did it.

Somebody got angry about that because it was Everybody's job. Everybody thought that Anybody could do it and Nobody realized that Everybody wouldn't do it.

In the end, Everybody blamed Somebody when actually Nobody blamed Anybody.

Snowmobile trips planned for this coming season:

2002

December 11-15, Houghton, MI (UP)

2003

January 2-6, Hurley, WI Eagle Bluff Condo's

January 16-19, Gaylord, MI for the ISA Ride-In Best Western

January 31-February 4, Houghton Lake, MI with the Kokomo Club

February 7-9, Women's Ride In for Easters Seals, Grayling, MI Holiday Inn

February 14-17, Wellston, MI Schmidt Outfitters

March 1-5, Canada, tentative plan to be northeast of Sault Saint Marie

Club information:

We meet every third Thursday of the month from September thru March at 7:30pm. Members often arrive around 6:30pm and have dinner at Claude & Annie's in their private banquet room. They are located at 141st Street and State Road 37, south of Noblesville.

For membership information or questions please contact our club president, Len Neisler at 317-915-0249 or e-mail him at: lenneisler@cs.com or write to us at: Snow Drifters, Inc. (of Hamilton County) P.O. Box 418 Arcadia, IN 46030. We can also be found at: <http://members.iquest.net/~cataha>.

TIMBER RIDGE LODGE

Built with the snowmobiler in mind
in the heart of the Hiawatha National Forest
On Trail Number 7

- All Suites/Queen Size Beds
- Microwave/Refrigerator
- Color TV/Coffeemakers
- Rec. Room/Sauna
- Heated Indoor Repair Area
- Lodge for Large Group
- Ample Parking/Ride-in or Trailer-in
- Gas/Restaurant 1/4 Mile Away

**For information, reservations
& honest snow conditions**

www.munisingwebsite.com/timberridgelodge
**N4045 Buckhorn Dr., Munising, MI
(906) 387-3790**



December 2002

ISA Scholarship

Eligibility

This scholarship is limited to ISA members and their families. To participate you must be a full time student and resident in the state of Indiana.

Selection Committee

The selections committee will be composed of a panel of judges selected by the ISA. Judges will be involved in the business work and have an educational background. The winning entry will be announced in the Hoosier Snowmobiler at a later date. We would like to have the winner and their family present.

Award

The scholarship will be awarded in the amount of \$500 made payable to and mailed to the college, university or vocational school of the winner's choice. This will be done prior to commencement of the second term and upon submission of an official transcript showing the equivalent of a "C" average or better. In addition to the first place prize a second place prize has been added, it will be \$250.

To Apply (Deadline March 1, 2003)

All entries must be submitted to:
Indiana Snowmobile Association
PMB 15010
6732 E. State Blvd.
Fort Wayne, IN 46885

Cover Page

On a separate sheet enclosed with

the essay, include the following information

- * **Your Name**
- * **Addresses**
- * **Telephone Number**
- * **Parent's Names**
- * **College, University, or Vocational School Name/ Address**
- * **Year in School**

The cover sheet will be detached prior to judging so there can be no favoritism by the judges.

Essay Topic

The entry must be an original essay on the subject: "Snowmobile trail use and safety". The essay is to be a minimum of two pages, not to exceed four pages in length and must be typed and double spaced. Essays will be judged on content, neatness, spelling, and grammar. The winning essay will be printed in the Hoosier Snowmobiler. The scholarship will be awarded strictly on merit.

GOOD LUCK!

RAINBOW LODGE

**Housekeeping
Motel Rooms Modern
Automatic Heat
Private Showers**

Located at the mouth of Two Hearted River
35 miles North of Newberry on the main trail
Paradise to Pine Stump and Grand Marals

**Cafe Open Winter Only
Serving breakfast & lunch
Motel rooms and two cabins
Regular and premium unleaded gas
92 Octane**

**General Store
Take Out Liquor
Gas & Oil**

**Snowmobile from your door on
hundreds of miles of trails
Trails now groomed to door**

906-658-3357
9706 Co. Rd 423 • Newberry, MI 49868
email: rbl2hrt@msn.com
www.rainbowlodgemi.com

SQUEEZE THE THROTTLE, NOT THE POCKETBOOK



Arctic Cat® Xs are the most affordable way to hit the snow. But they still have the same quality as our other sleds. The Z® 570 SS comes equipped with AWS™ V front suspension and FasTrack® Long-Travel Rear Suspension System. It also has Extra Travel Tunnel™ (ETT) and Torque Sensing Link™ (TSL). Come check one out today.

**COME IN NOW
for the best deal on an
Arctic Cat snowmobile**

ARCTIC CAT®
What Snowmobiling's All About.™



2426 Cassopolis Street • Elkhart, IN • 1/2 Mile South Toll Road Exit 92
www.northendcycle.com • 574.264.0618



Snowmobile Rules Rankle in Yellowstone

HELENA, Montana (AP) -- Business leaders in West Yellowstone, Montana, the self-proclaimed "snowmobile capital of the world," fear the Bush administration's plan for managing snowmachines in Yellowstone and Grand Teton national parks could spell doom for business in their town.

While the plan is expected to cap the number of snowmobiles at a level above the current average daily use, it also will set a strict limit on the number allowed to enter Yellowstone through the West Yellowstone entrance, the most popular entrance for snowmobilers.

"What this plan means, basically, is that our business would be cut right in half," Glen Loomis, a snowmobiler and owner of Polaris West in West Yellowstone, said Monday. "They're trying to spin this as allowing an

increase in snowmobile use, but that's not what's going to happen here at all."

"If this is what they really end up doing, we're going to have some real concerns," added Clyde Seely, who runs a number of businesses in West Yellowstone, including a snowmobile rental shop.

Few pleased with plan

The Interior Department is expected to release an environmental impact

statement Tuesday detailing the plan. It is intended to be a compromise between unlimited access wanted by snowmobile makers and users and the ban that had been proposed by the Clinton administration earlier and supported by environmentalists.

But few on either side of the issue seemed pleased Monday. Environmental groups criticized the plan for not doing enough to protect the two national parks.

"This is just a boon to the industry," said Kristen Bregel of The Wilderness Society, an environmental group. "This is not what the American public has been expecting."

For the past decade, the parks and the John D. Rockefeller Jr. Memorial Parkway that connects them have had an average of 840 snowmobiles daily during the winter. But during holidays and busy weekends, up to 1,650 have visited daily. It is not uncommon for more than 1,100 snowmobiles to pass through the West Yellowstone entrance alone on some of the busiest days.

According to officials speaking on condition of anonymity, the Bush administration plan would cap the daily number of snowmobiles, beginning in December 2003, at no more than 1,100 a day for both parks and the parkway.

Of that number, only 550 would be allowed to pass through the West Yellowstone entrance on any given day.



**INSTRUCTIONS:
PINCH THROTTLE.
RELEASE TENSION.**



The Indy 700 Classic Touring. With the EDGE™ chassis and variable exhaust, try our version of therapy. Ride.

Proud member of CASS Snowmobile Club

**Congratulations to the CASS Club for being voted
Snowmobile Club of the Year**

We Sell Michigan Trail Permits



ROCHESTER POLARIS

574-223-7559

3110 State Road. 14 East • Rochester, IN 46975



North Central Indiana's Polaris Only Dealer.



December 2002

"If they limit it to 550 snowmobiles, that takes half our business during the busiest times," Loomis said. "That's going to be a huge impact on the town of West Yellowstone. How would you like it if someone came in and said 'we're taking half your money'?"

Additionally, the regulations would require that 80 percent of the snowmobiles allowed in the two parks beginning next season be led by commercial guides, and would require all rented snowmobiles to have four-cycle engines, which are quieter and burn cleaner than conventional two-cycle engines. Private snowmobile owners could use traditional two-cycle engines until the 2004-05 winter season.

Loomis and Seely said the requirement that all rental machines be four-cycle models does not bother them. In fact, both already have added four-cycle models to their rental fleets.

"I think we have always worked toward making reasonable changes in the park," Seely said. "The question is, are these caps reasonable?"

In 1999, the Environmental Protection Agency recommended snowmobiles be banned from the two parks as the "best available protection" for air quality, wildlife and the health of people who work and visit there. The Interior Department advanced that idea in the waning days of President Clinton's tenure.

The Bush administration ordered a new review as part of a settlement with snowmobile makers who challenged the proposed ban. The EPA softened its opposition to the recreational vehicles this year, saying federal clean air standards could be met with newer machines that use stricter pollution controls.

Copyright 2002 The Associated Press.

Grass Dragging for Beginners

continued from page 21

so slightly in your favor. Every little thing adds up in the long run. In other words, "the way to win big is to start big."

Keeping your Cool:

A means of cooling down your sled between runs is a must. To do this, you will need to build a cool down cart. This consists of a normal size cooler, a 12 volt pump, (I bought a bilge pump at Boat U.S. for \$9 bucks and some change), a 12 volt power source, (a motorcycle battery works great), approx. 12' of hose, (cut into two 6' sections), and two pairs of quick connect couplers. All of this fits nicely in my kid's wagon. The thermostat is removed from the snowmobile to allow the water to flow throughout the system. Then, a set of quick connect couplers is added in one of the hoses under the hood. The other pair is hooked up to the pump hose and the return hose.

To cool down the sled, just connect to the pump and turn it on. The cool tap water in the cooler will flow through the system and back to the cooler. It only takes about a minute or so to do the job. Of course, now you have a cooler full of warm water. A second cooler with bags, (or preferably blocks), of ice is used to cool down the water in your cool down cart.

I use a gas powered leaf blower to cool down my clutches between races.

Some of the costs I've accrued so far. (Costs may vary depending on how serious you get into the sport)

SNELL rated helmet- already had, but expect to pay at least near the \$200 range

TekVest - retail starts at around \$200
Gloves - \$25 and up
Shin guards - \$10 and up
Idle wheels - approx. \$15 ea (I replaced/ added 12)
Hyfax - \$30

Clutching and gearing changes - approx. \$150
Jetting changes - (a wide variety of jet sizes) \$35
K&N filters - \$60
Racing springs (rear torsion) \$50
Ski wear bars - \$40
Cool down cart - approx. \$65 (not inc. coolers)
You will also need a few extra belts

Including belts, I have just under \$1k tied up in my grass drag set-up. Sponsorship can help defray these costs though. If you can convince a business you will provide them good advertising, they may support your racing efforts with products, discounts, or other types of payments.

One need not get this carried away to just show up and have fun. I've seen guys show up with just jetting changes and run their sleds as is.

On race day, expect to pay for a daily membership, to the organization running the race. You may want to purchase a yearly membership, if you'll be running in several of their events. Entry fees for each class

TERRACE MOTEL

On Trail # 419

Information on snowmobiling,
hunting, & fishing

Located in a quiet neighborhood
18 Units • Ample Trailer Parking
Cable/Color TV • Sauna/Gameroom
Indoor Heated Repair Area
Non-Smoking Rooms • At Door Parking
Complimentary Coffee/Ice

*Without crossing a city street or
highway, enjoy miles of groomed trails.*

*Located in a quiet neighborhood
just 2 blocks south of M28.*

The trail starts in our parking lot.

906-387-2735

420 Prospect Street • Munising, MI 49862



Sound - Part 2

This is a multi part story on sound & snowmobiles

The Speed of Sound

Sound waves travel at a constant speed, regardless of the loudness or softness of a sound. Temperature, however, does affect their speed. At room temperature, sound travels in the air at a speed of 1,130 feet per second. Sound waves travel one mile in about five seconds. At freezing (0 C), sound waves travel at 1,087 feet per second or one mile in about 5 seconds.

Some sounds are high and others are low-, some are loud and others are barely audible; some are pleasant and others harsh. The three basic properties of any pure sound are its pitch, its intensity, and its quality.

The Pitch of Sounds

Pitch is simply the rate at which vibrations are produced. Another way to define the pitch of a tone is to find its wavelength. The wavelength of a particular tone is equal to the velocity of sound divided by the frequency of the tone.

Intensity and Tone Quality

The intensity of a sound has nothing to do with its pitch. Intensity depends upon the strength of the vibrations producing the sound. The loudness of sounds is measured in decibels (dB).

Reflecting and Forcing Sound Waves

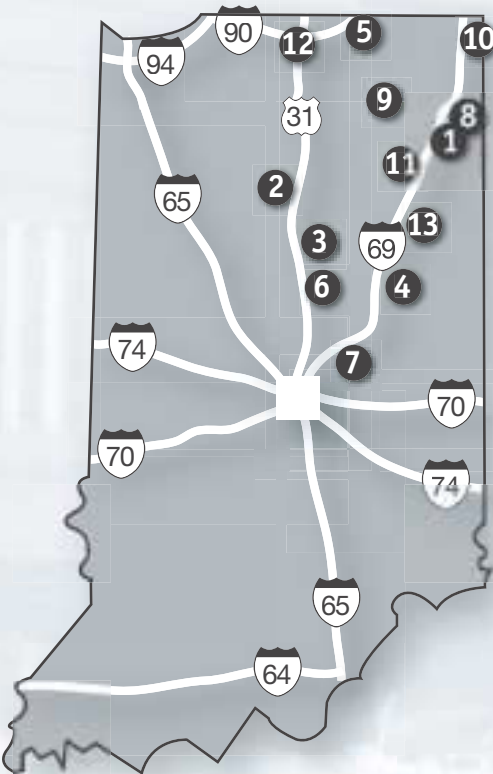
Like light waves, sound waves can be reflected and focused. An echo is simply a reflection of sound. A flat surface, like that of a cliff or wall, reflects sound better than an irregular surface, like a tree, which tends to break up sound waves.

Other examples of decibel levels are as follows:

Sound dB(A)

- 75-Piece Orchestra..... 130
- Car Horn, Snowblower 110
- Blow-dryer, Diesel Truck 100
- Electric Saver, Lawn Mower 85

Check out our clubs



1. Ron Oberley
Bucks & Does SMC
18349 Lincoln Hwy. E.
Monroeville, IN 46773
260-623-6355
2. Bruce Miller
Cass SMC
762 E 750 S
Rochester, IN 46975
574-857-3637
3. Tonya Walden
Central Indiana SMC
3660 W 350 S
Kokomo, IN 46902
765-883-4767
4. Mike Bookout
Eastern Indiana SMC
#4 Mike Bookout
7331 N. County Rd. 600 W
Gaston, IN 47342
765-358-4265
5. Tim Yoder
Elkhart Co. SMC
54038 CR 33
Middlebury, IN 46540
574-825-2451
6. Len Neisler
Snow Drifters of Hamilton Co.
P.O. Box 418
Arcadia, IN 46030
317-915-0249
snow.drifters@insightbb.com
<http://members.iquest.net/~cataha>
7. Marvin Shelton
Hancock Co. Snow Roamers
4487 E. SR 52
Rushville, IN 46173
765-932-2072
8. Brian Sechler
Hoagland Blizzard Blazers
515 Stratton Road
Ft. Wayne, IN 46825
260-482-5766
9. Larrie Barrett
Lakeland SMC
8809 E. Epworth
Forest Rd.
North Webster, IN 46555
574-834-2178
10. Dave Hoffer
Potawatomi Snowmobilers
P.O. Bx 813
Freemont, IN 46737
260-833-3053
<http://pscsnowbilers.com>
daveandmicci@hotmail.com
11. Sally Rogers
Salamonie Trailmasters
304 S. 3rd Ave.
Jonesboro, IN 46938
765-674-2791
12. Diana Thornton
South Bend SMC
P.O. Box 873
South Bend, IN 46628
574-784-8676
13. Jim Rhoton
Winter Wan-Derers
8385 E 500 N
Montpelier, IN 47359
765-728-2187

Sled with some friends!



December 2002

Garbage Disposal, Vacuum 80
 Alarm Clock, City Traffic..... 70
 Dishwasher..... 60
 Leaves Rustling, Refrigerator ... 140

Effects on Wildlife

Dr. Andres Soom participated in the University of Wisconsin's comprehensive three-year study on the effects of snowmobile sound levels on deer and cottontail rabbits. His report entitled Emission, Propagation and Environmental Impact of Noise from Snowmobile Operations, concluded that "only minor reactions were noted in the movements of cottontail rabbits and white tailed deer to moderate and intensive snowmobiling activity". He stated that it had not been possible to determine sound levels at which there is clear reaction on the part of the deer "because snowmobiles must be so close to deer to generate the higher levels that other factors such as visible presence ... are likely to be more important".

The Wisconsin study also compared the reaction of deer to the presence of cross-country skiers. When cross-country skiers replaced snowmobiles on the test trail systems, the deer moved away

from the trail more frequently.

A three-year study, Response of white-tailed Deer to Snowmobiles and Snowmobile Trails in Maine, conducted by wildlife scientists for the Maine Cooperative Wildlife Research Unit and the Maine Department of Inland Fisheries and Wildlife, revealed that: "Deer consistently bedded near snowmobile trails and fed along them even when those trails were used for snowmobiling several times daily. In addition, fresh deer tracks were repeatedly observed on snowmobile trails shortly after machines had passed by, indicating that deer were not driven from the vicinity of these trails... The reaction of deer to a man walking differed markedly from their reaction to a man on a snowmobile... This decided tendency of deer to run with the approach of a human on foot, in contrast to their tendency to stay in sight when approached by a snowmobiler, suggests that the deer responded to the machine and not to the person riding it".

In a study entitled Snow Machine Use and Deer in Rob Brook, conducted by the Forest Wildlife Biologist of the White Mountain National Forest in New Hampshire, snowmobile operations and

deer movement were monitored. A summary of the study indicated that deer travel patterns were not affected by periodically heavy snowmobile use. In addition, continued use of established trails was recommended.

The University of Minnesota issued a study by Michael J. Dorrance entitled Effects of Snowmobiles on White Tailed Deer which found no meaningful difference in the deer's home range during periods of snowmobile use and non-use.

Addressing the subject of snowmobile operations in Yellowstone National Park, Jack Anderson, a former Superintendent of Yellowstone commented: 'We found that elk, bison, moose, even the fawns, wouldn't move away unless a machine was stopped and a person started walking. As long as you stayed on the machine and the machine was running, they never paid any attention. If you stopped the machine, got off and started moving, that was a different story. The thing that seemed to be disturbing to them was a man walking on foot".

Next month will be the final part on Other Effects

www.indianasnowmobilers.com

All your snowmobiling needs in one place

Indiana Snowmobilers Website
 Hoosier Hotline: 574.679.4006, Call for trail conditions



COMMERCIAL MEMBERS

The following have joined the Indiana Snowmobilers Association as Commercial Members and support the efforts of the state organization.

Action Motor Sports

1201 Sagamore Parkway N.
Lafayette, IN 47904
765-449-2553

Arctic Cat Inc.

PO Box 810
601 Brooks Ave. S.
Thief River Falls, MN 56701
218-681-8558

B.L.T. Design

1268 Central Ave.
Noblesville, IN 46060
317-773-1525

Best Western Alpine Lodge

833 W. Main St.
Gaylord, MI 49735
989-732-2431

Black Bear Lodge Resort

1279 Halberstadt Road
St. Germain, WI 54558
800-563-4340

Bob-A-Lou's

236 E. Jefferson Street
Tipton, IN 46072
765-675-9898

Bob's Standard Station

103 S. West Street
Tipton, IN 46072
765-675-6118

Brady's Landing Sport Center

1850 North Shore Drive
Rome City, IN 46784
219-854-4872

Bretz Sales and Service

640 W. Chestnut Street
Union City, IN 47390
765-964-7224

Bullseye Outdoor Sports

Arctic Cat & Polaris
148 Creekside Dr.
Kokomo, IN 46901
765-459-0077

Chester, Inc.

Highway US 30 E.
Valparaiso, IN 46383
219-462-1131

Comfort Inn

RR 4 Box 785 A
Newberry, MI 49868
906-293-3218

Community Business Equip.

156 E. Market Street
Nappanee, IN 46550
574-773-7375

Cycle Sport Yamaha

8544 E. US 6
Hobart, IN 46342
219-962-4770

Cylinder Clinic

16105 Parrish Ave.
Lowell, IN 46356
219-696-4334

DNR

402 Washington St., Rm. 271
Indianapolis, IN 46204
317-233-3149, 232-4070

Dunhill Tuxedos

7140 Broadway
Merrillville, IN 46410
219-769-7471

Eby Pines

14583 State Road 120
Route 2
Bristol, IN 46507
574-848-4520

Grand Traverse Resort

100 Grand Traverse Village Blvd.
Acme, MI 49610
800-748-0303

Great Northern Motel

Hwy. 51 S
Mercer, WI 54547
715-476-2440

Greenfield Motor Sports

4606 S. 100 E.
Greenfield, IN 46140
317-462-2262

Hayden Honda Kawasaki

619 Westgate
Kendallville, IN 46755
219-347-0060

Heartlake Resort

9603 Old 27 S.
Gaylord, MI 49735
989-732-5081

Higgins Sport & Lawn

912 S. Huntington
Syracuse, IN 46567
574-457-4043

Honda Yamaha of Decatur

1009 Southampton
Decatur, IN 46733
219-728-2128

Hoosier Worldwide Export

124 South Michigan St.
Lakeville, IN 46536
574-784-3343

International Snowmobile Tours

PO Box 55
Chesterfield, IN 46017
765-378-5074

Iroquois Inn

PO Box 414, Lakeshore Drive
Brimley, MI 49715
800-763-0132

Jim Dandy's Restaurants, Inc.

136 W. Jefferson
Tipton, IN 46072
765-675-7531

Kokomo Cycle Gear

122 Creekside Dr.
Kokomo, IN 46901
765-457-4090

Krupp's Power Sports

70986 M-62
Edwardsburg, MI 49112
616-663-8424

Krupp's Resort

HCR-1 Box 227
Twin Lakes
Toivola, MI 49965
906-288-3404

L.B.L. Printing

7757 Auburn Rd. #11
Concord, OH 44077
440-350-0106

Liberty Mutual Group

PO Box 1525
Dover, NH 03821
603-749-2600

Lolo Hot Springs

38500 Hwy. 12 W.
Lolo, MT 59847
800-273-2290

Loomis Cycle Sales

8201 Grand Blvd.
Merrillville, IN 46410
219-942-0548

Lost Lake Inc.

16099 W. CR 750 S.
Daleville, IN 47334
765-378-7865

Marine Mooring, Inc.

3404 N. 600 E.
Warsaw, IN 46580
219-594-5787

Max Pitts Yamaha

900 US 31 South
Peru, IN 46970
765-472-2423

Means Refrigeration

1306 Bond Street
Frankton, IN 46044
765-754-8221

Michaywe Vacation Rentals

1535 Opal Lake Rd.
Gaylord, MI 49735
800-322-6636

MidWest Detail & Design

PO Box 255
Bremen, IN 46506
574-546-4199

Mr. H of South Bend

50715 US 31 N.
South Bend, IN 46637
574-272-4484

North End Cycle Shop

2426 Cassopolis Street
Elkhart, IN 46514
574-264-0618

Polaris Industries

1225 Hwy. 169 N.
Plymouth, MN 55441

Quality Inn of Gaylord

137 West Street
Gaylord, MI 49735
800-732-7540

R & D Motorsports

515 N. Line Street
Columbia City, IN 46725
219-248-8522

R & R Trailer Sales

55431 Franklin St.
Three Rivers, MI 49093
616-578-5310

R.T. Sales, Inc.

18349 Lincoln Hwy. E.
Monroeville, IN 46773
219-623-6355

Raisor Power Sports

531 S. 300 E.
Monticello, IN 47960
574-583-4426

Rance Aluminum Fabrication, Inc.

4406 Wyland Drive
Elkhart, IN 46516
574-295-5658

Recreational Salvage

16105 Parrish Avenue
Lowell, IN 46356
219-696-4334

Rochester Polaris

3110 State Road 14 East
Rochester, IN 46975
574-223-7559

S & H Rogers

304 S. Third Ave.
Jonesboro, IN 46938

Sanders Rensselaer

2081 N. McKinley
Rensselaer, IN 47978
219-866-5131

Schnelker Marine

640 Lincoln Hwy. W.
New Haven, IN 46774
219-749-8909

Shortsleeve's Motor Sports

350 W. Washington
Upland, IN 46989
765-998-2794

Sleds & Treads

3420 E 96th Street
Indianapolis, IN 46240
317-575-1712

Snow City

671 W. Chicago Rd
Bronson, MI 49028

The New Sportland Marine

722 Dunn Street
Fort Wayne, IN 46808
219-482-8213

Terpstra's S & S

1235 Glen Park Ave.
Griffith, IN 46319
219-838-3600

Thompson Powersports

607 J. Street
LaPorte, IN 46350
219-362-9411

Trailite Sales

5240 US 20-A
Delta, OH 43515
800-448-7922

Transmission & Fluid

Equipment
6912 Trafalgar Dr.
Fort Wayne, IN 46803
219-473-3223

Up North Lodge

PO Box 907
Gwinn, MI 49841
906-346-9815

When & Where Trucking

7331 N. CR 600 W.
Gaston, IN 47342
765-747-0899

White River Motel

PO Box 608
White River, ONT P0M 3G0
807-822-2333

Xtreme Motorsports

6647 Kennedy Ave.
Hammond, IN 46323
219-844-4400

Yamaha Motor Corp., USA

PO Box 6555
Cypress, CA 90603



Motel Guide

Please Support Our Sponsors

Alger Falls Motel

Hiawatha National Forest
2 Miles East of Trail -
Near Munising - Gas, Oil,
Snowmobile Parts Available
906-387-3536

All Season's Resort

Kalkaska
100's of Miles of Groomed
Trails - Casino Packages
Available - Midweek
Discounts
800-806-1580
www.kalkaskaallseasons.com

Black Bear

St. Germain
Happy Trails...and they're
right outside your door Resort
Restaurant - Lounge
800-563-4340
www.blackbearlodge.com

Cowboy Village

Jackson Hole, WY -
Snowmobile the Continental
Divide, Yellowstone &
Jackson Hole
800-543-2847
www.cowboyvillage.com

Days Inn

Gaylord
Direct Trail Access - Trailer
Parking - ISA Member
Discounts
800-952-9584

Deer Run

St. Germain
1 to 6 Bedroom Vacation Homes
Bo-Boen Trail - Color/Cable TV
800-450-7200
www.cropseyvacationrentals.com

Heart Lake Cabins

Gaylord
On the trail - Free Trail Maps
Ride from your front door
25% Weekday Discount
Ample Parking Late
Check out
989-732-5081

Hearthside Inn

St. Germain
28 Units - Whirlpool Rooms
Refrigerators - Trail at the
Door - Ski-Doo Rentals
877-902-2500
www.hearthside-inn.com

Holiday Inn

Gaylord
Snowmobile From Our Back
Yard - Full Service Holidome
989-732-2431
www.gaylordholidayinn.com

Holiday Inn

Marquette - Group Packages
Available...Nightly
Entertainment - Restaurant
Lounge - 800-HOLIDAY
906-225-1351
www.holiday-inn.com/
marquettemi

Lake Superior Cottage

Lake Superior
3 Bedroom, 2 Bath, Fully
Equipped, Ride from the
Cabin to the Trail
586-774-9306
www.lakesuperiorcottage.com

North Shore Lodge

Grand Marais
Under New Management
Restaurant & Gift Shop, Indoor
Pool, Sauna - Snowmobile
from Door - 906-494-2361

Northgate Motel

Calumet
The Hub of Snowmobiling in
Michigan on US 41
800-373-7703
906-337-1000

Pine Cone Accommodations

Gaylord
3 Month Vacation Rentals
Close to Trails - Rentals with
Garages, Fireplaces & Game
Rooms - 866-731-1887
www.pinecone
accommodations.com

Pride o' th North

St. Germain
Snowmobile from your cottage
Bo-Boen Trails - XC on loop
trails-well marked
715-542-3793
www.prideo-thnorth.com

Rainbow Lodge

Newberry
Motel Rooms, 38 miles north
of Newberry on trail, Cafe,
General Store, Gasoline,
Two Cabins
906-658-3357
www.rainbowlodgemi.com

Ramada Inn

Angola
Located I-69 Exit 154
Completely modern facility
877-965-5341 or
260-665-9471

Rich Ranch

Seeley Lake, MT
Elevations from 4000ft to 8500ft
1500 miles of groomed trails
140 to 500 inches of snow
Cedar and Log Cabins
Private Baths
Family Style Meals
406-677-2317
www.richranch.com

St. Germain Lodge

St. Germain
Deluxe Condo Vacation
Homes - 2 Full Baths,
Fireplace, Microwave,
Dishwasher - Direct Access to
Bo-Boen Trails Cross Country
Skiing 715-542-3433
www.stgermainlodge.com

Terrace Motel

Munising
On The Trail
Ample Trailer Parking
906-387-2735

Timber Ridge

Munising
All Suites/Queen Size Beds
Microwave/Refrigerator, Color
TV - On Trail Number 7
Heated Indoor Repair Area
Lodge for Large Group
906-387-3790
www.munisingwebsite.com/
timberridgelodge

White Fawn Lodge & Forest Glen Resort

Munising
Furnished Cabins 2-4 bed-
rooms, Lake front and Woods
locations available. Our main
lodge offers rooms, suites,
or apartment size units
906-573-2999

Whitetail Lodge

St. Germain
Indoor Pool & Hot Tub
Fireplace Rooms - Whirlpool
in Every Room - Direct
Access to Hundreds of Miles
of Well Groomed Trails
Snowmobilers Special
800-236-0460
www.whitetaillodge.com



CLASSIFIEDS

RT Sales

469 US 30E
East Zulu, IN 46773
(219) 623-6355

2002 ZL-500 Norm	\$4,650.00
2000 Powder SPL	\$3,599.00
2001 Panther	\$3,999.00
2000 ZRT-600 REV	\$4,499.00
1995 EXT-580 EFI	\$2,399.00
1998 ZR 600	\$3,699.00
2002 ZR 500	\$4,899.00
1999 ZR 700	\$3,599.00
1998 ZR 600 LE	\$3,699.00
2001 Z 440	\$3,399.00
1998 ZR 500	\$3,499.00
2001 ZR 500	\$4,399.00
2001 ZL 600 ESR	\$4,799.00
2000 ZR 600	\$3,999.00
2001 ZR 800	\$5,499.00

1999 Ski-Doo MXZ 600	\$3,199.00
2001 Ski-Doo MXZ 500	\$3,699.00
1995 Ski-Doo Formula SL	\$2,399.00
2000 Ski-Doo MXZ 600	\$3,699.00
2000 Ski-Doo Grand Tour	\$5,499.00
1994 Ski-Doo Mach Z	\$2,099.00
2001 Yamaha SX 500	\$4,799.00
2000 Yamaha SXR 600	\$4,299.00
1997 Yamaha Indy 500	\$2,699.00

ATV's

2001 Yamaha Blaster	\$2,499.00
2002 Yamaha Warrior	\$4,299.00
2001 DS 650	\$4,999.00
2000 Honda 300 EX	\$2,999.00
2001 Arctic Cat 250 2X4	\$2,899.00
2000 Yamaha SRX 700	\$4,299.00
2001 Yamaha Blaster	\$2,399.00

North End Cycle

2426 Cassopolis Street
Elkhart, IN
(574) 264-0618

2001 Polaris Pro X 600	\$5,000.00
2002 Yamaha Viper	\$5,000.00

Heart Lake Cabins

On the trail • Gaylord • Free Trail Map • Ride from your front door • 25% • Weekday discount • ample parking • Late Sunday Check-out • Starting at \$54.00
Phone: 989-732-5081

Totem Rescue Ambulance

See www.offroadrescue.com
Call 705-647-6549.
Email: mid-can@nt.net
The Life Saved Might Be Yours

Classified Ad Rates

Non-ISA Members \$20.00/20 words - .75/ea additional word. Commercial/Dealer Associates \$10.00/20 words - .50/ea additional word.
Advertisers: one FREE ad up to 20 words per display ad either in classified or the motel guide.

ADVERTISER INDEX

Alger Falls Motel	15
Al's Snowmobile Parts	6
All Season's Resort	14
Bretz Sales	11
Cowboy Village	20
Days Inn, Gaylord	13
Fish & Hunt Shop	22
Gaylord Area	20
Greenfield Motor Sports	21
Holiday Inn Marquette	23
ISA Ride-In	BC
Lake Superior Cottage	35
MSI (Mobile Structures)	25
Mercer Chamber	11
Munising Visitors Bureau	33
North End Cycle	27
Northgate Motel	24
Pine Cone Accomodations	9
Planet Powersports	7
Rainbow Lodge	27
Rochester Polaris	28
RT Sales	10, 11, 21
Schnelker	9
Ski-Doo	16-17
Sydney's Shark Bay Bar	24
Trailite Sales	5, 7
Terrace Motel	29
Timber Ridge Lodge	26
White Fawn Lodge	35
White Star Auction	15

Lake Superior Cottage

**3 Bedroom • 2 Bath • Sleeps 8
Fully Equipped**

Direct TV • Telephone • Washer/Dryer

Ride From The Cabin to the Trail
\$125 a Night - 4 Night Min.

*On Beautiful Lake Superior over looking
Autrain Island & Grand Island*

586-774-9306
www.lakesuperiorcottage.com



"America's Best Kept Secrets"
**White Fawn Lodge
Forest Glen Resort**

*Munising Area - Upper Peninsula of Michigan
"In the Heart of the Hiawatha Ntl. Forest"*

We offer furnished cabins with 2-4 bedrooms, so you don't need to bring household items from home. Lake front and Woods locations available. Our main lodge offers rooms, suites, or apartment size units. All of our modern rooms have carpeting, color TV's microwaves, refrigerators, and coffee machines. (Bed and Breakfast facilities available.)

We offer a heated Community Building, BBQ grills with picnic area, boat and snowmobile rentals. Airport pickup and delivery available.

We're the Midwest Capital of Snow, Snow, & more Snow!
We have 250 miles of groomed snowmobile trails!

The Resort has a Complete General Store:
Gas & Oil • Beer, Wine, & Groceries • Hunting & Fishing Licenses • Equipment, Tackle, & Bait
Snowmobile Rentals

For more information & reservations:
White Fawn Lodge, LLC. • Forest Glen Resort

906-573-2999

N. 1871 Federal Forest Hwy. 13 • Wetmore, MI 49885
email: jwhitehd@up.net

Your Hosts, The Whiteheads

**To place your
advertisement in the
Hoosier Snowmobiler,
contact Harry Thurkow
at 1-888-SNORIDE**

January 16-19 11th Anniversary ISA Ride-In Gaylord MI

Come Join the Fun!!
Thousand of Dollars in Prizes
Satisfaction Guaranteed!

(Prizes available to attending ISA Members only)

What to Expect:

The famous I.S.A. Chuck Wagon Cookout!
You will enjoy some of the most beautiful trails in Michigan while getting your game cards stamped!
As always, the Scavenger Hunt will be in full swing!
The Alphabet has been our game....but nothing stays the same!



Best Western Alpine Lodge

# of Persons	2 Nights Fri/Sat
1	\$240.35
2	\$148.55
3	\$122.95
4	\$102.65

3 Nights Thurs/Fri/Sat
\$310.55
\$183.65
\$153.85
\$127.70

4 Nights Wed/Thurs/Fri/Sat
\$380.75
\$218.75
\$187.25
\$155.25

Package Prices
853 W. Main • Gaylord, MI

For Reservations: 989-732-2431
For "Ride-In" Details: 765-754-8221

Package prices are for adults. Children stay free with parents; children's meal tickets may be purchased at front desk. All prices include taxes and gratuities.
For any ISA Board Member arriving on Wednesday, the rate of \$59 per room per night of January 13, 14, 19 or 20 will be honored for all hotel rooms. This price is for single or double occupancy.
Meals Only: TICKETS TO BE PURCHASED AT FRONT DESK. Saturday Night Banquet: \$23.50 Adults/ \$12.00 Children/ Saturday Breakfast Buffet: \$11.50 Adults/\$5.00 Children/ Sunday Breakfast On Own
*Children's prices age 12 and under
All meal tickets include tax and gratuity. All packages must be guaranteed with a credit card and a 50% per person down payment. If credit card is not available, package must be paid in full at time of reservation. Down payment is non-refundable if package is cancelled less than 72 hours prior to event.
**NO RIDE CLAUSE: In the event there is insufficient snow to allow guest to ride trails, cancellation policy will be null and void. There will be no other exceptions to policy, either on a group or individual basis.
Hors d'oeuvre and meal tickets will be given to guest at check-in. Tickets are non-refundable and cannot be replaced if lost. In the event a ticket is lost, a new ticket would have to be purchased at the front desk.